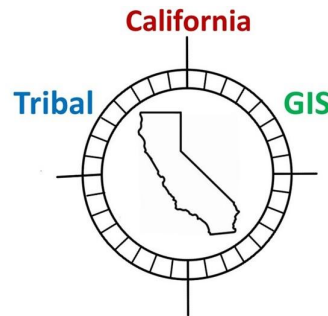
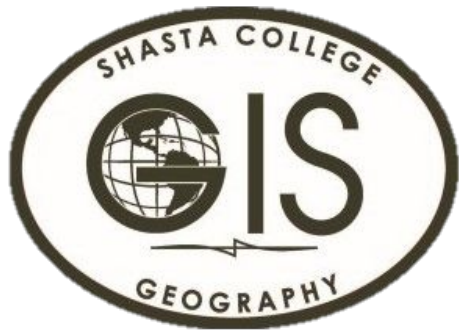




Thank you to our sustaining members!



UNDERGROUND SERVICE ALERT

—► NORTHERN CALIFORNIA & NEVADA ◄—

USC Dornsife
Dana and David Dornsife
College of Letters, Arts and Sciences
Spatial Sciences Institute

<https://cgia.org/membership-options/join-cgia/>

If you are interested in becoming a sustaining member, email membership@cgia.org!





A Conversation on Tribal GIS Native American Heritage Month – November 2023

Hosted by
California Geographic
Information Association's
Member Engagement
Committee

Join Us!
<https://cgia.org/>

*Image created by
Cordi Sogge for 2018
GIS Day at DWR*



Image courtesy of <https://weallcount.com/>

CGIA Conversation Series on GIS and Equity –

- January – The Geography of Disadvantaged Communities
- February – Rural/Urban Divide
- April – GIS and Planning for Equity
- Coming in 2024: **Professional Development Series**

Board seats open: Tribal Government and Federal Government constituencies;

Contact chair@cgia.org for more information



We acknowledge the Land of
the People who lived here
since time immemorial,
stewarded the land. They are
still here.

Our home on Native Land

<https://native-land.ca/>

- We invite you to introduce yourself in the chat and type in the Tribal area where you are.
- If you are affiliated with a Native American Tribe or identify with any Indigenous People anywhere on the earth, please include that.



Patwin Land

Today's Featured Speakers

Dr. Donna Miranda Begay, PhD

CEO and founder of California Tribal GIS, CGIA Board Member, Tubatulabal Researcher and Cultural Practitioner. Retired IT manager, State Water Resources Control Board
<https://catribalgis.org/>

Honorable Matthew Sequoyah Williford

Chairman/Cultural Resources Director/NAGPRA Rep, Konkow Valley Band of Maidu Indians
<https://www.konkow.us/>

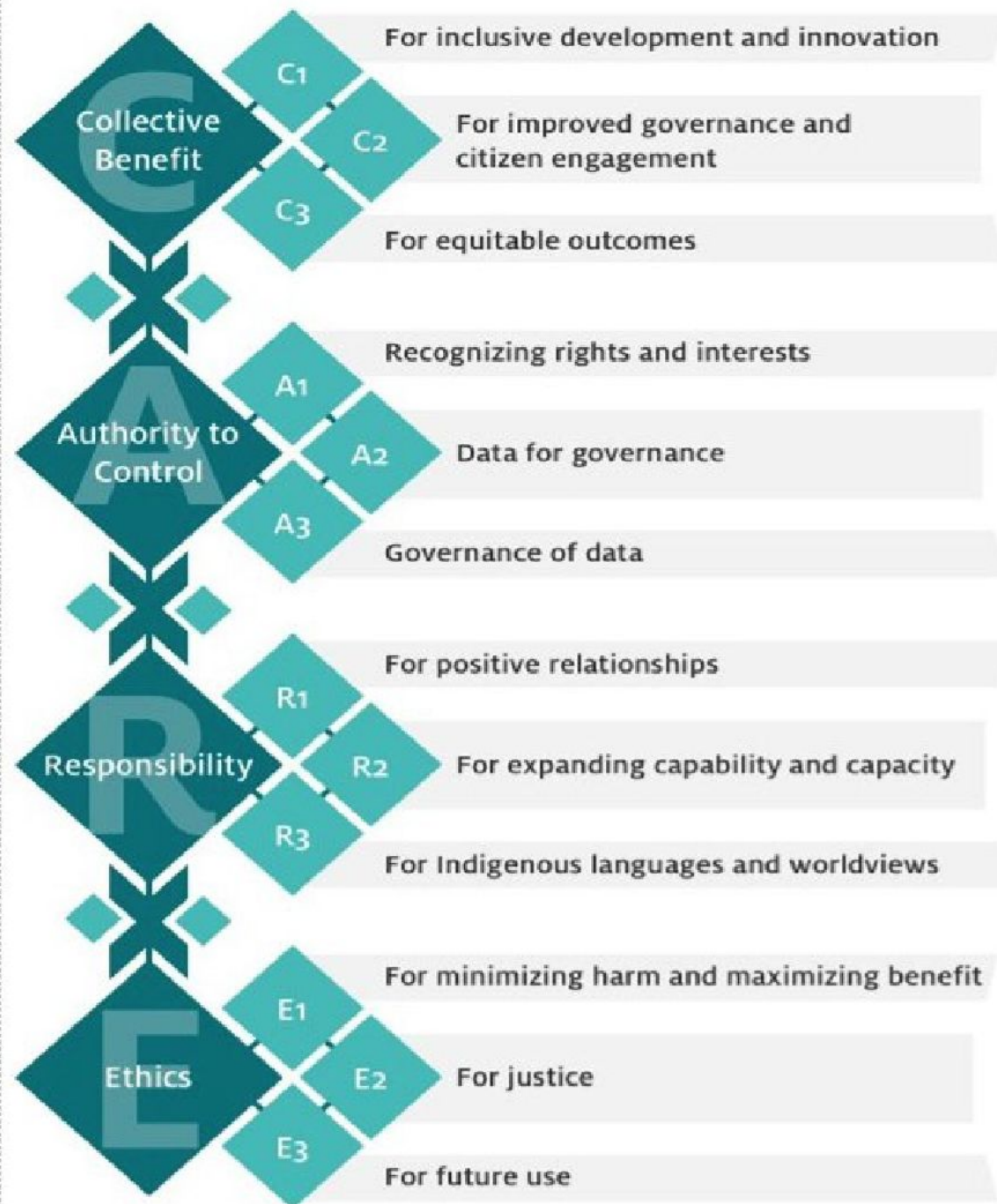
Ms. April Carmelo

Indian Education Coordinator Title VI/JOM (Johnson-O'Malley Act) Specialist at Shasta Union High School District for the past 24 years.
<https://www.suhsd.net/Students/Indian-Education/index.html>; Citizen of Greenville Rancheria

#BeFAIRandCARE



Global Indigenous Data Alliance <https://www.gida-global.org/care>



Tips to Supporting Indigenous Data Sovereignty

1. Recognize and promote sovereignty.
2. Center Indigenous values when working in Indigenous communities.
3. Conduct scholarship in service to community and support community-driven research
4. Build research and/or development capacity within communities.
5. Use existing tribal and Indigenous data governance protocols and procedures.
6. Support Indigenous scholars, whether they are in communities or in the academy. Include them at the decision-making table, as co-authors, and as grant reviewers.

Thanks to Andrew Martinez, a research specialist with the Native Nations Institute, University of Arizona
Watch video of Andrew at the CA Water Boards Data Science Symposium June 2022
https://www.youtube.com/live/veA1mbOvV9E?si=f7P_qoZXGUmwliNT

Thank You for joining us!

