



Karen Gaffney, Director of Strategic Planning  
North Coast Resource Partnership



Building Resilient, Responsive  
Organizations & Communities  
CGIA Climate Change Speaker Series

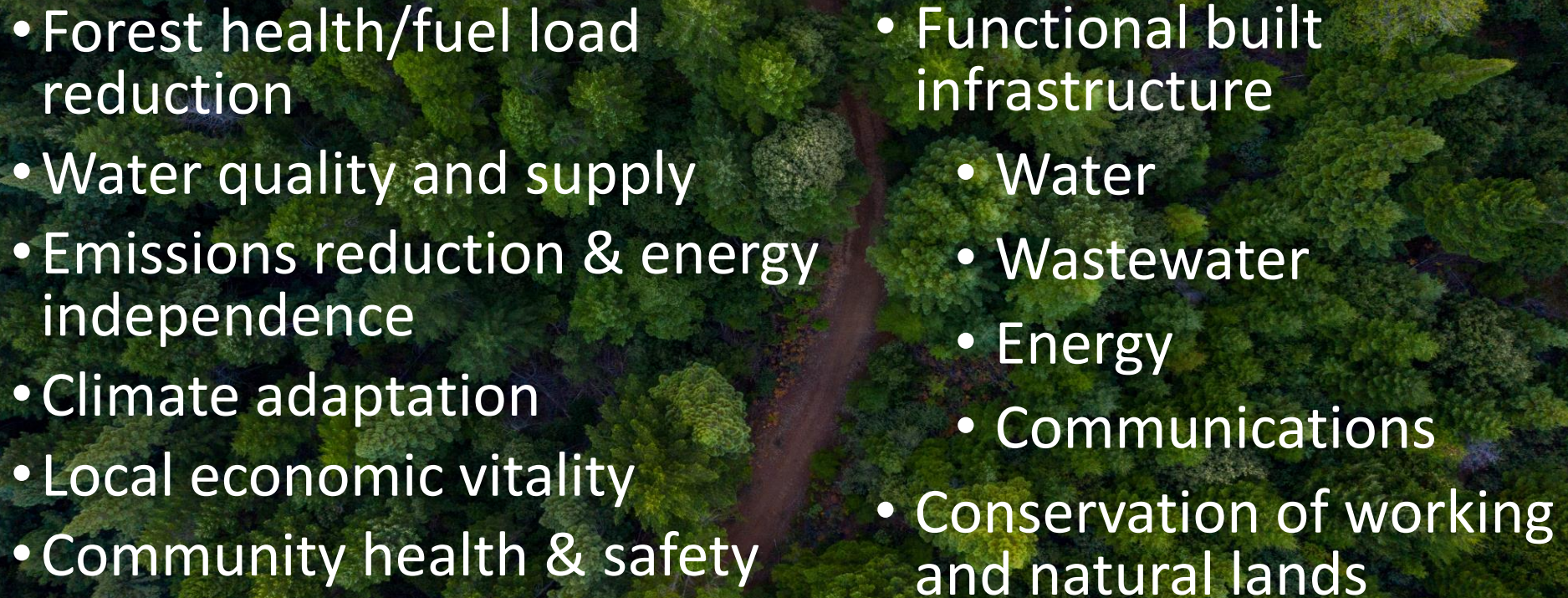
- Leadership: North Coast Tribes & Counties
- Equity, Transparency, Inclusion, Shared Vision
- State & Federal Partner Collaboration
- Western & Tribal Science:
  - Landscape Scale + Local Data, Local Knowledge
- Prioritization & Implementation of Projects/Actions
- Efficient & Effective Use of Public Dollars/Reporting ROI





Source Region:  
Carbon, Water, Biodiversity

# MULTIPLE OBJECTIVES/MULTIPLE BENEFITS

- 
- An aerial photograph of a lush green forest with a narrow stream or path cutting through the center. The trees are dense and vibrant green, with some darker patches indicating shadows or different tree species. The stream is a dark, winding line that provides a focal point in the landscape.
- Forest health/fuel load reduction
  - Water quality and supply
  - Emissions reduction & energy independence
  - Climate adaptation
  - Local economic vitality
  - Community health & safety
  - Functional built infrastructure
    - Water
    - Wastewater
    - Energy
    - Communications
  - Conservation of working and natural lands



OVERVIEW

PRIORITIZATION

STRATEGIES

DEMONSTRATION PROJECTS

PLAN IMPLEMENTATION



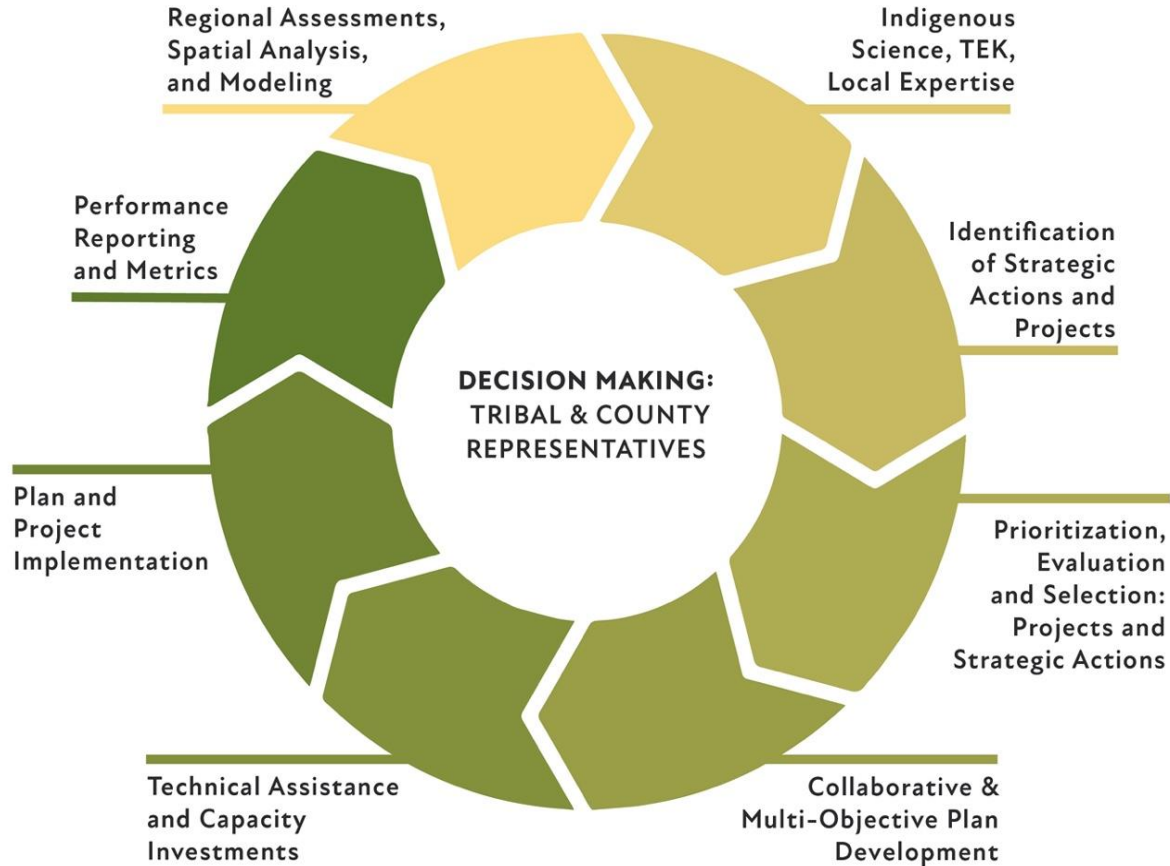
A VISION FOR


# NORTH COAST RESILIENCE

---

PRIORITIES FOR ENHANCING WATERSHED,  
FIRESHED, FOREST, AND COMMUNITY RESILIENCE  
IN THE NORTH COAST REGION

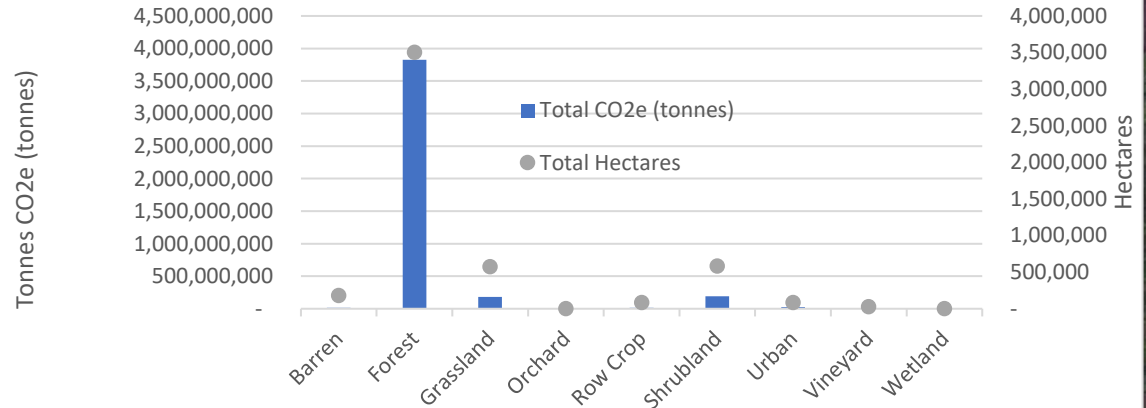
# NCRP Adaptive Planning & Prioritization Framework



An aerial photograph of a river delta, likely the Amazon, showing a complex network of waterways and land. A semi-transparent green rectangular box is overlaid on the top portion of the image, containing white text. The text reads "CARBON STOCKS & ABOVE GROUND BIOMASS: Location & Quantity".

# CARBON STOCKS & ABOVE GROUND BIOMASS: Location & Quantity



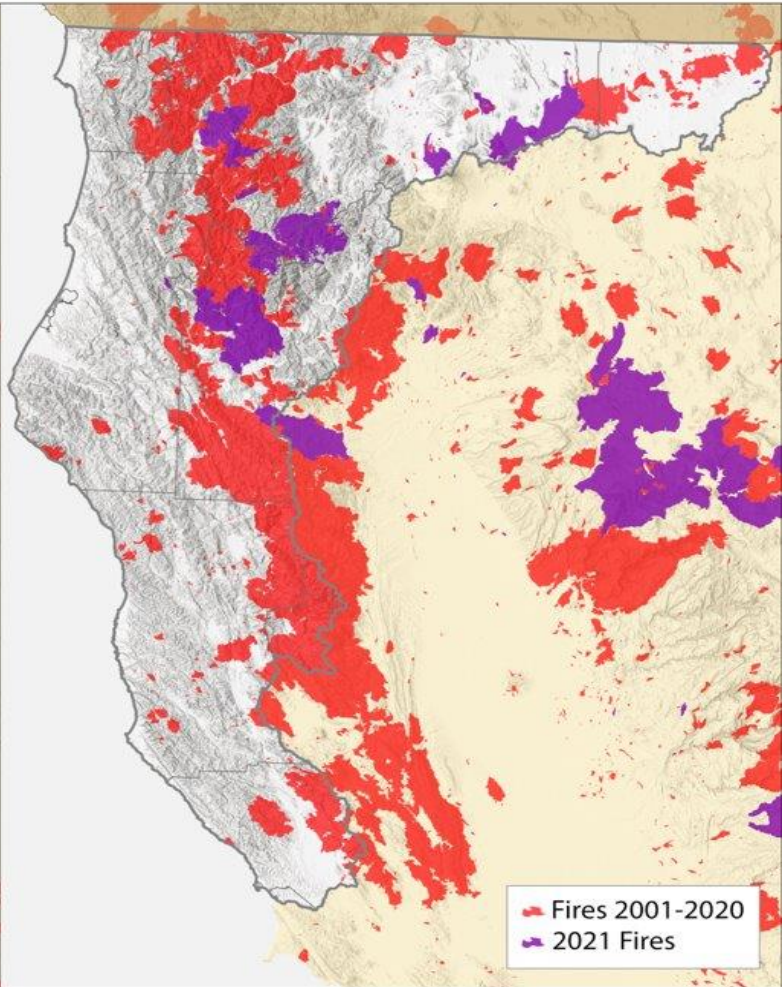
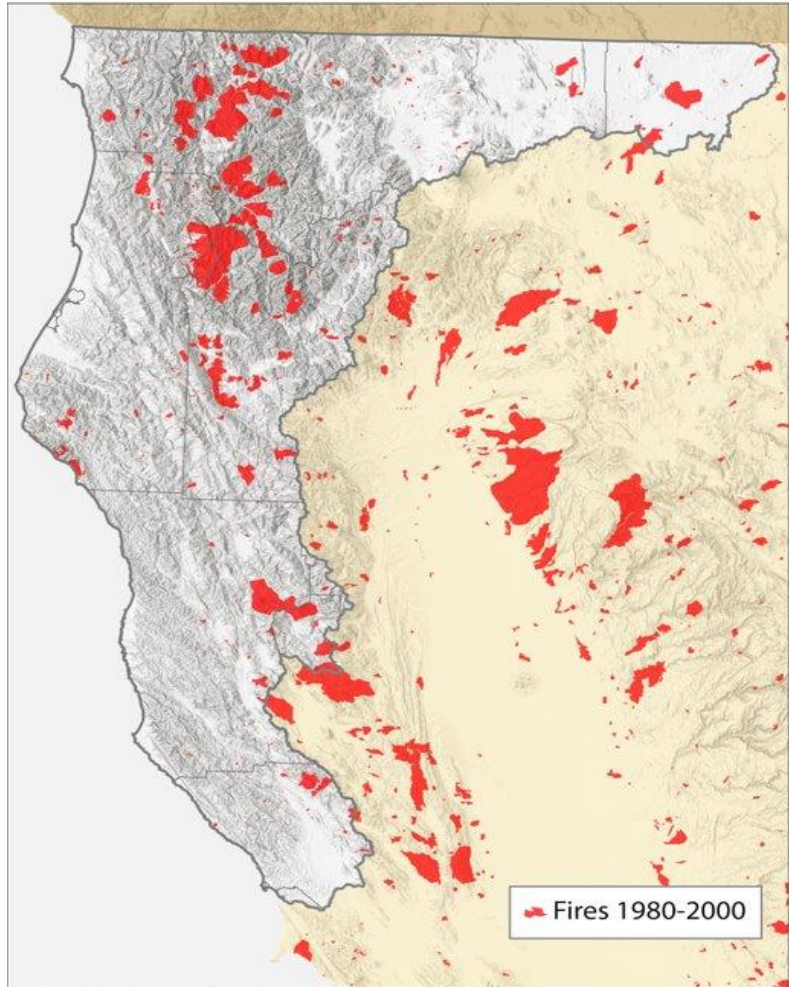


Total CO2e and Hectares by Landcover Class

4+ Billion  
Metric Tonnes CO2e  
(eg, avoided emissions)

Fire History 1980 Through 2000

Fire History 2001 Through 2021



An aerial photograph of a wetland or marsh area. The terrain is covered with dense, low-lying vegetation, primarily in shades of yellow and orange, interspersed with darker green patches. The vegetation appears to be growing in water-saturated soil, with some areas showing more intense orange and red hues, possibly indicating different plant species or stages of growth. The overall texture is highly detailed and granular.

# FUEL LOADING & LADDER FUELS: Location, Quantity, Quality

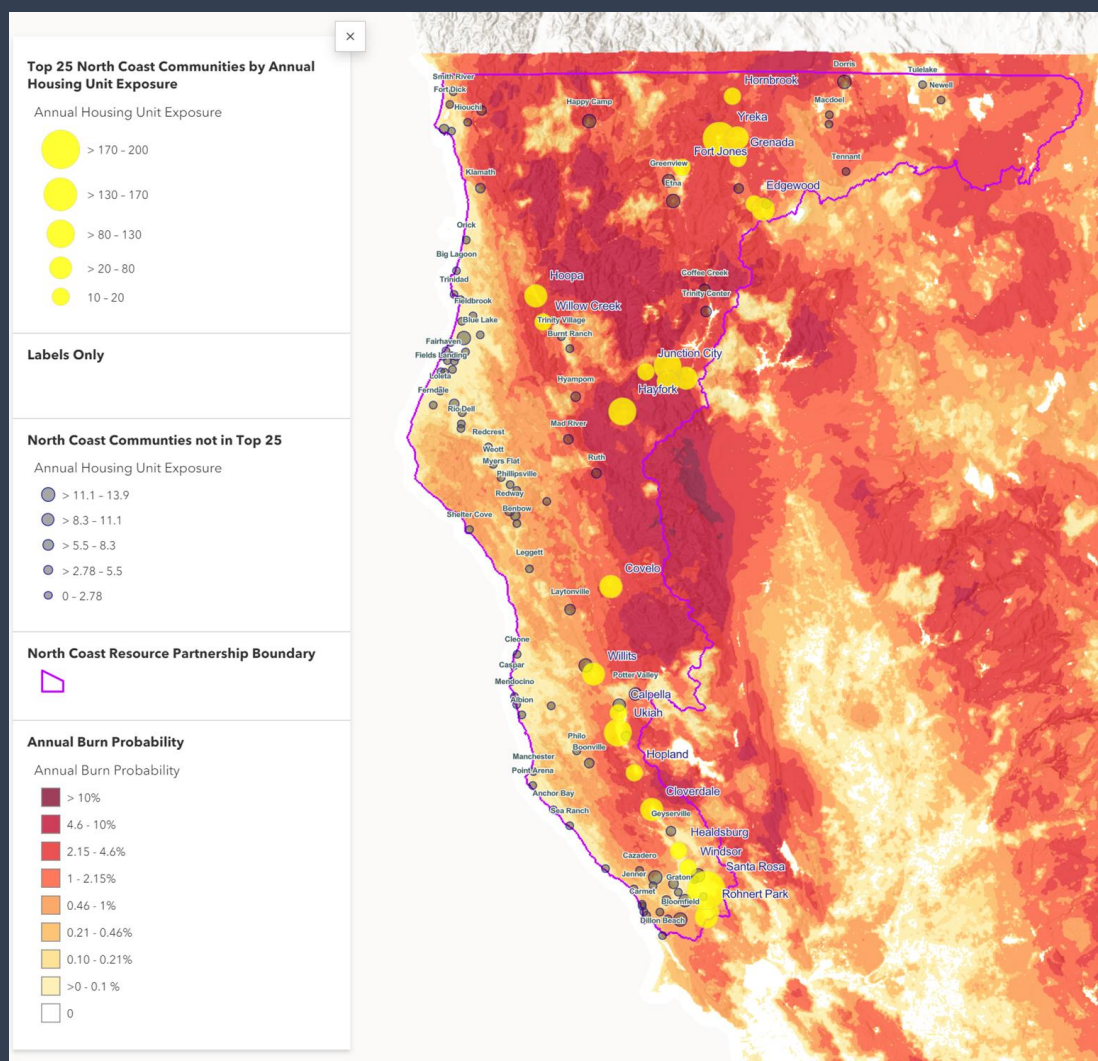


# REGIONAL DATA & LOCAL KNOWLEDGE



# Assessments: Communities At Risk

- Investigates North Coast communities' exposure and vulnerability to wildland fire
- Inputs:
  - Burn Probability
  - Housing Unit Density
  - Social Vulnerability Index



A scenic view of a riverbank. The foreground is dominated by a rocky shore covered in fallen brown leaves. To the right, a calm river reflects the surrounding greenery. The background is filled with dense, lush green trees, creating a sense of a natural, undisturbed environment.

**Floodplain Riparian Forests:**

**95% Loss**

**Since European Settlement**

# Human Community Benefits

- **Cultural values & subsistence resources**
- **Drought & climate resiliency**
- **Water supply & quality**
- **Flood attenuation**
- **Recreation & scenic values**
- **Fishing**

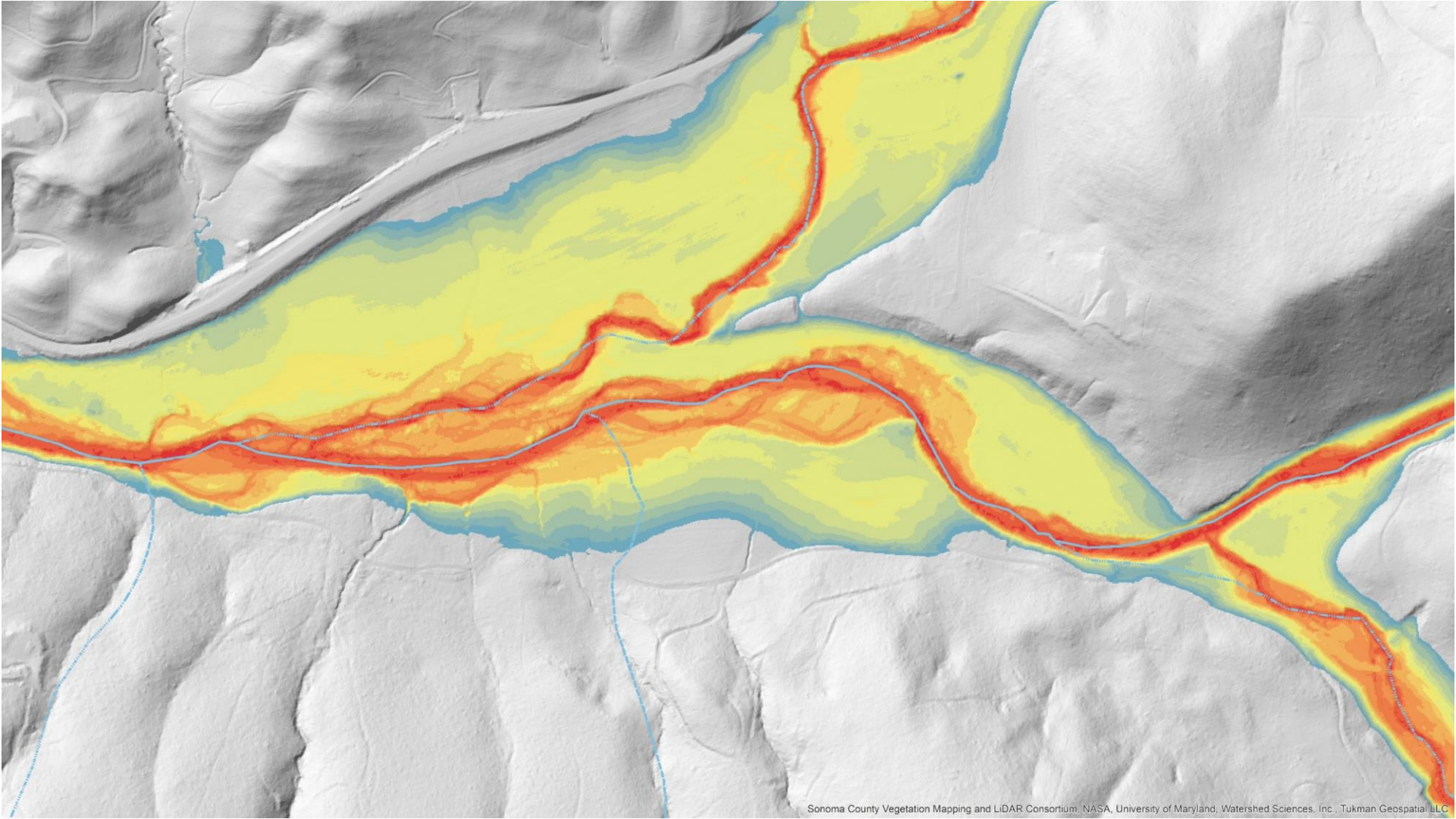




# PRIORITIZING Riparian Ecosystems

- **Where: conservation in a 12 million acre landscape**
- **What: current or future state?**
- **How: types of easements, ecological restoration, policy**
- **Need: data, plans, strategies, engagement**
- **Enhancements: physical & biotic drivers**







# SOLUTIONS & STRATEGIC ACTIONS

- Workforce
- Tribal leadership & stewardship
- Year-round local capacity
- Cultural values
- Forest health
- Home hardening
- Regulatory streamlining
- Procurement policies
- Land use
- Landowner incentives
- Ecosystems & biological diversity
- Woody biomass utilization
- Water quality
- Data and information

**50+**





North Coast Resource Partnership:

[www.northcoastresourcepartnership.org](http://www.northcoastresourcepartnership.org)

Karen Gaffney:

[kgaffney@northcoastresourcepartnership.org](mailto:kgaffney@northcoastresourcepartnership.org)