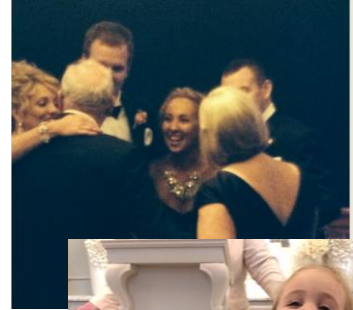
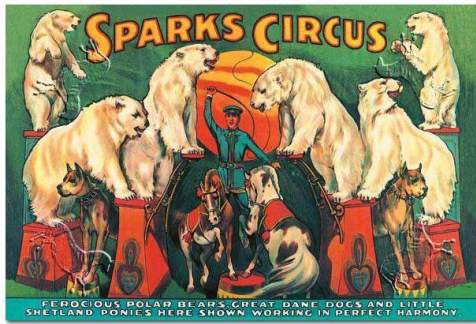


California Geographic Information Association

# GIS Governance in Indiana

# Jim Sparks

- County gov: 2 yrs.
  - State gov: 3 + 10 yrs.
  - University: 3 yrs.
  - Private sector: 25 yrs.
- 
- B.S. in Business Administration
  - M.S. in Management
- 
- Survey crew rodman
  - Civil engineering draftsman
  - County cartographer
  - Computer aided mapper
  - GIS Administrator
  - Project manager
  - GIS consultant
  - GIO



## Jim Sparks

- Husband
- Father of two daughters
- Grandfather of CiCi, Stella, and Sully
- Dog lover (rescues Josie and Gabi)
- Map and GIS enthusiast



1987 1988 1989 1990 1991 1992 1993 1994 1995 1996 1997 1998 1999 2000 2001 2002 2003 2004 2005 2006 2007 2008 2009 2010 2011 2012 2013 2014 2015 2016 2017 2018 2019 2020

-First statewide GIS Conference

-GIS Atlas for Indiana

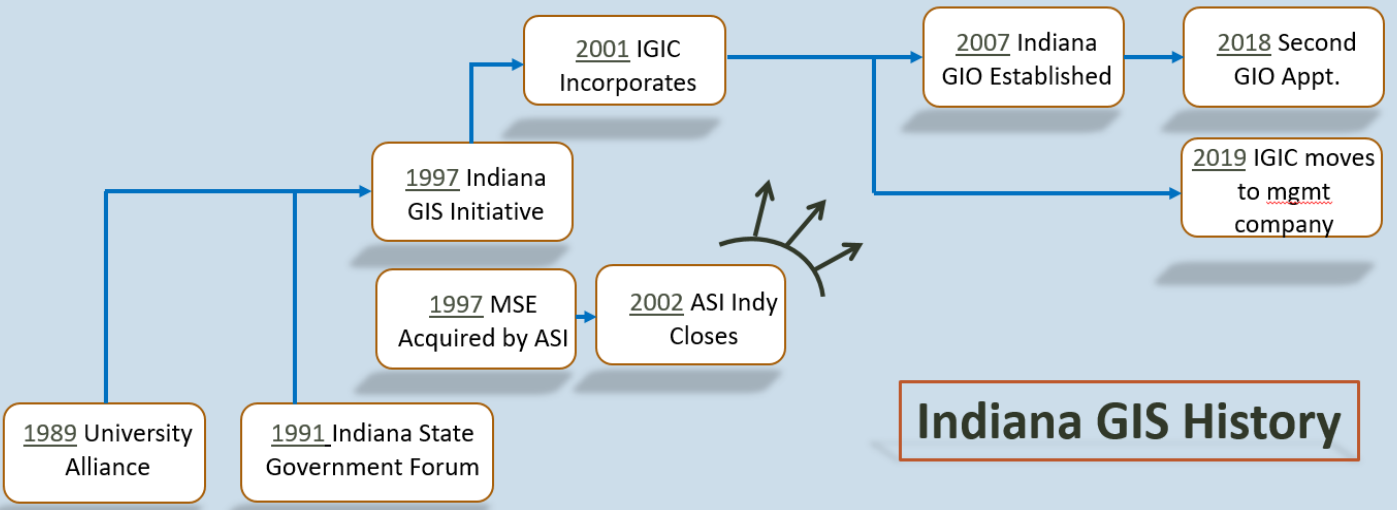
-Statewide Ortho

-Data Sharing Initiative IndianaMap (Atlas rebranded)

-NHD Improvement Statewide Ortho/LIDAR

-Statewide Ortho

-Statewide QL2 LIDAR



# Indiana GIS History



# I.C. 4-23-7.3 Indiana GIS Mapping Standards



# I.C. 4-23-7.3 Indiana GIS Mapping Standards



Coordinate  
GIS Efforts

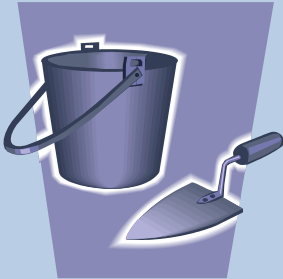


Integrate  
Data

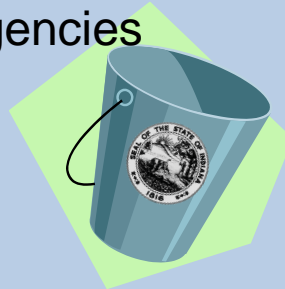
## GIO

# Responsibilities

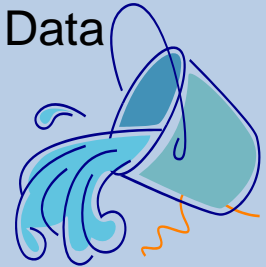
Create  
New Data

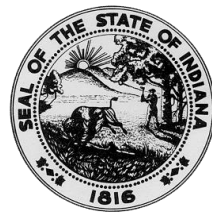


Serve as GIO  
for State  
Agencies



Distribute  
Data



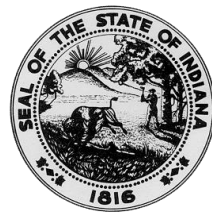


# IC 4-23-7.3-13 (7/1/2007)

## State GIS officer; appointment; qualifications

- (a) The governor shall appoint an individual as the state GIS officer.
- (b) The individual appointed by the governor must be an experienced geography and mapping professional who has:
  - (1) extensive knowledge of the principles, practices, terminology, and trends in GIS, spatial data, analysis, and related technology; and
  - (2) experience in administration, project management, policy development, coordination of services, and planning.

# IC 4-23-7.3-13 (7/1/2007)



## Indiana Mapping Data And Standards Fund (Sec. 19)

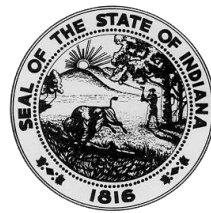
(a) The Indiana mapping data and standards fund is established for the following purposes:

- (1) Funding GIS grants.
- (2) Administering this chapter.

(b) The fund consists of the following:

- (1) Appropriations made to the fund by the general assembly.
- (2) Gifts, grants, or other money received by the state for GIS purposes.

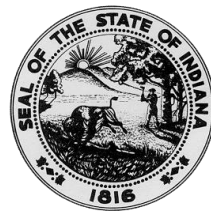




# IC 4-23-7.3-13 (7/1/2007)

**With money from the fund, the GIS officer shall:**

- (1) Ensure that there are adequate depositories of GIS data
- (2) Acquire, publish, store, and distribute GIS data
- (3) Integrate GIS data developed and maintained by state agencies and political subdivisions into the statewide base map.
- (5) Except as otherwise provided in this chapter, provide public access to GIS data
- (6) Provide assistance to state agencies and political subdivisions regarding public access to GIS data so that information is available to the public.
- (7) Develop and maintain statewide framework data layers associated with a statewide basemap.

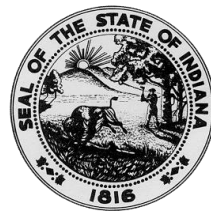


# IC 4-23-7.3-13 (7/1/2007)

**The state GIS officer shall do the following:**

- (1) Function as the chief officer for GIS matters for state agencies.
- (2) Review and either veto or adopt both the:
  - (A) state's GIS data standards; and
  - (B) statewide data integration plan;

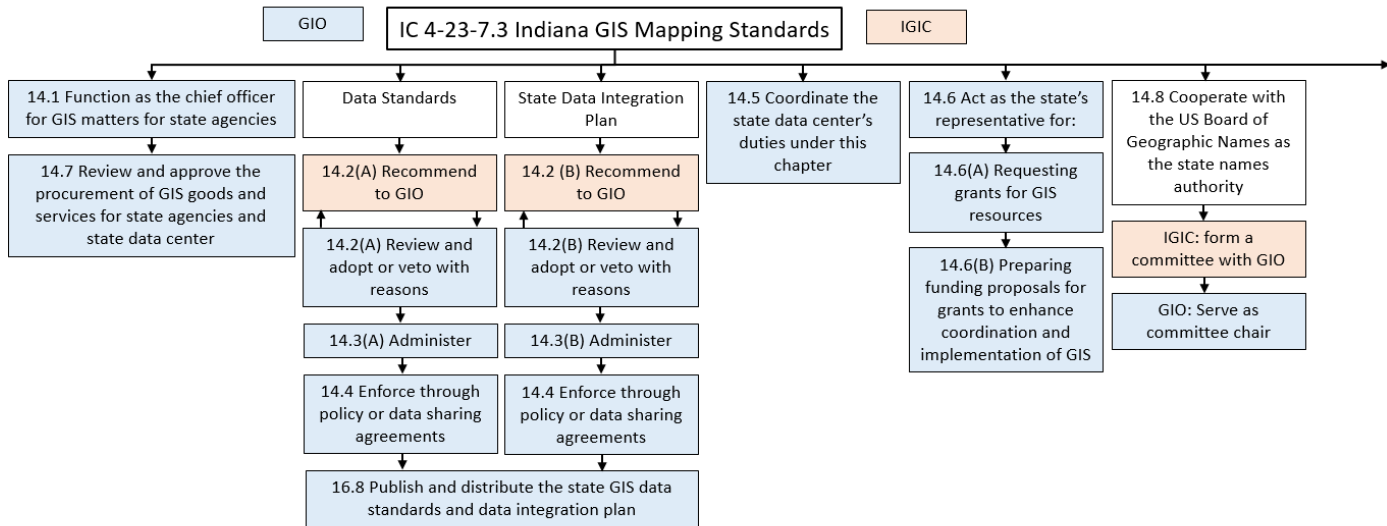
as recommended by the IGIC. If either of the recommendations is vetoed, the state GIS officer shall return the recommendation to the IGIC with a message announcing the veto and stating the reasons for the veto. If the IGIC ceases to exist or refuses to make the recommendations listed in this subsection, the state GIS officer may develop and adopt state GIS data standards and a statewide data integration plan.



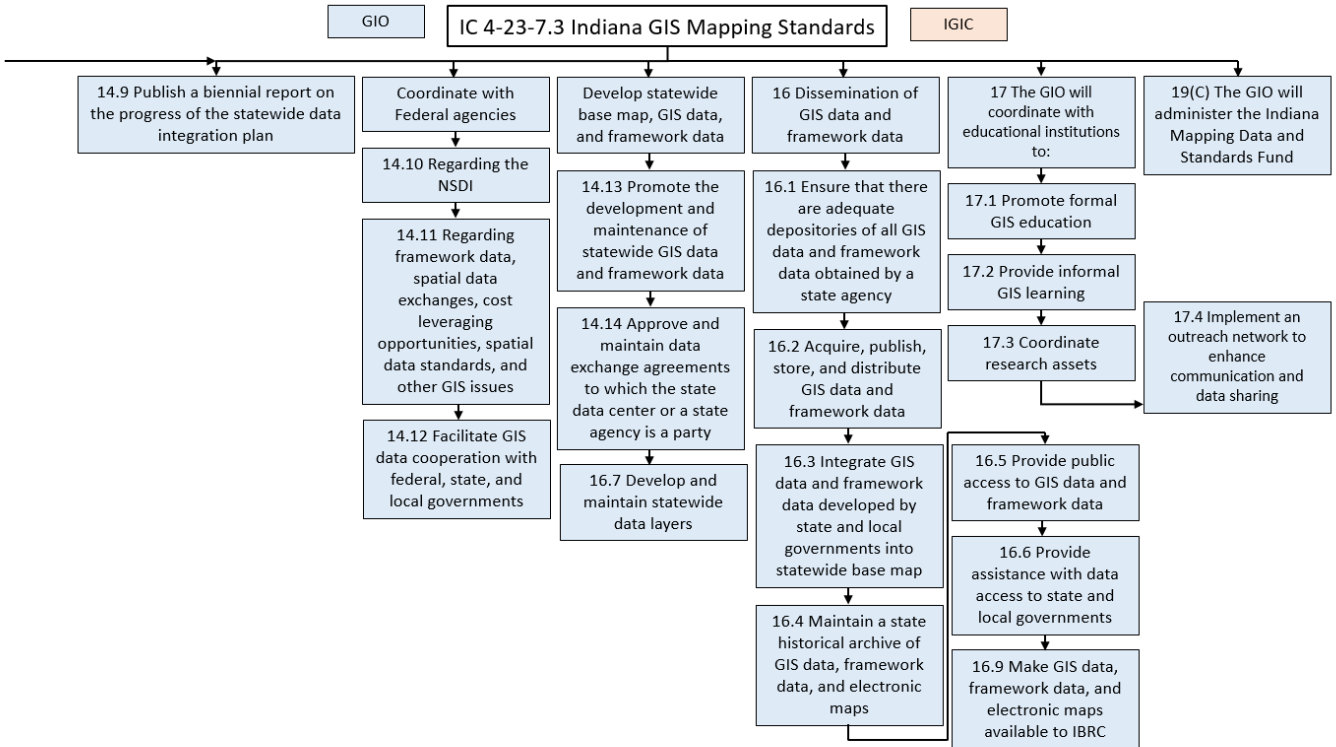
# IC 4-23-7.3-13 (7/1/2007)

## The state GIS officer shall do the following:

- Cooperate with the United States Board on Geographic Names established by P.L.80-242 by serving as the chair of a committee formed with the IGIC as the state names authority for Indiana.
- Use personnel made available from state educational institutions to provide technical support to the: (A) state GIS officer in carrying out the officer's duties under this chapter; and (B) IGIC.
- Acquire, publish, store, and distribute GIS data and framework data through the computer gateway administered by the office of technology and through the state data center. The state GIS officer may also provide access through the IGIC and other entities as directed by the state GIS officer.



### Authoritative Responsibility for GIS Coordination in Indiana



### Authoritative Responsibility for GIS Coordination in Indiana



## Indiana Geographic Information Office

- Mandated by IC 4-23-7.3 to:
- Coordinate GIS among all government levels
  - Create and distribute Frameworks Data
  - Manage GIS Fund

Housed inside state government

Sits on IGIC Board

Per IC 4-23-7.3, IGIC will provide a State Data Integration Plan to the GIO for approval

Organized as a 501(c)(3) non-profit

**Board of Directors:**

- County Government (3)
- Municipal Government (3)
- State Government (3)
- Federal Government (2)
- Nonprofit (2)
- Commercial GIS Service Provider (2)
- Regional GIS Consortia (2)
- Surveyors (2)
- Universities (2)
- Regional Planning Commissions (1)
- Utilities (2)
- Critical Infrastructure (2)
- At Large (Any Sector or None) (4)

The objectives of IGIC are to provide for the coordination of Indiana GIS through dissemination of data and data products, education and outreach, adoption of standards, building partnerships, and the IndianaMap.

## Indiana Geographic Information Council

### Projects & Initiatives

- Data Sharing Initiative
- Orthophotography Program
- NHD Improvement
- Height Modernization
- IndianaMap ROI
- NHD Geo-Synchronization
- Hazus Essential Facilities
- Statewide Framework Layers
- Broadband Map

Data Integration Plan

### Framework Data Workgroups

- Addresses
- Boundaries
- Cadastre
- Elevation
- Geodetic Control
- Orthoimagery
- PLSS
- Streets
- Waters

**IndianaMap**  
www.indianamap.org

The IndianaMap is a portfolio of projects that involve the collaborative efforts of federal, state, and local partners. The purpose of these efforts is to acquire, improve, and deliver a wide variety of Geographic Information Systems (GIS) data for Indiana.

The IndianaMap provides a viewing tool that can be used to view and query more than 220 layers of GIS data through the web. The available data include aerial photographs, land cover, reference layers, and layers related to infrastructure, demography, environment, hydrology, and geology.

### Partners, Contributors & Stakeholders

- Indiana Counties
- Indiana Cities
- Indiana Geological Survey
- UIITS, Indiana University
- The Polis Center
- Surveyors
- The Public
- The Private Sector
- USGS
- State Government
- Federal Government