

# MAPPING A STRATEGY FOR GIS

REPORT #248, OCTOBER 2019



LITTLE HOOVER  
COMMISSION

TAMAR FOSTER  
DEPUTY EXECUTIVE DIRECTOR  
[TAMAR.FOSTER@LHC.CA.GOV](mailto:TAMAR.FOSTER@LHC.CA.GOV)  
[WWW.LHC.CA.GOV](http://WWW.LHC.CA.GOV)



# COMMISSION COMPOSITION

## **Four Legislators**

2 Assembly: Mayes (Ind.), Quirk (D)

2 Senate: Nielsen (R), Roth (D)

## **Nine Public Members**

5 Gubernatorial appointees

4 Legislative appointees

## **Bi-Partisan, by Statute**

No more than 5 public members from the same party



## COMMISSION'S PURPOSE & PROCESS

Created in 1962 as an independent, bi-partisan oversight body within the administrative branch of state government.

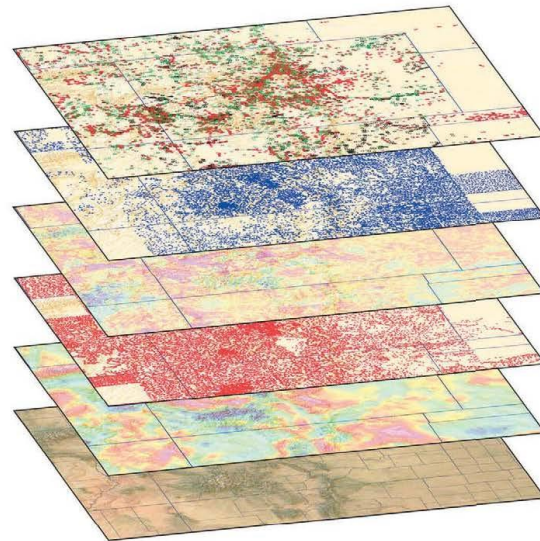
Offer recommendations to the Governor and Legislature on ways to improve state government operations, create efficiencies, and better serve Californians.

Review Governor's reorganization plans.



## ***MAPPING A STRATEGY FOR GIS***

REPORT #248, OCTOBER 2019



A LITTLE HOOVER COMMISSION REPORT  
TO THE GOVERNOR AND LEGISLATURE OF CALIFORNIA



## RECOMMENDATIONS

1. Designate and empower a State Geographic Information Officer
2. Formalize a California GIS Advisory Council
3. Use GIS to evaluate governmental spending and program outcomes

For more details:

[www.lhc.ca.gov/report/mapping-strategy-gis](http://www.lhc.ca.gov/report/mapping-strategy-gis)



# IMPLEMENTATION

## 1. Legislation

AB 2209 (Mayes): California Geographic Information Office

*For questions/comments, contact Brandon Ebeck,  
brandon.ebeck@asm.ca.gov*

## 2. Department of Technology is recruiting a State Geographic Information Officer