

# CA Status Update on Producing and Contributing Elevation-Derived Hydrography for 3DHP

---

***CGIA Community Forum: LiDAR for California***

Thursday, December 5, 2024



**Joel Osuna-Williams**  
Senior Project Manager  
Center for Geospatial  
Science and Technology  
CSU, Northridge



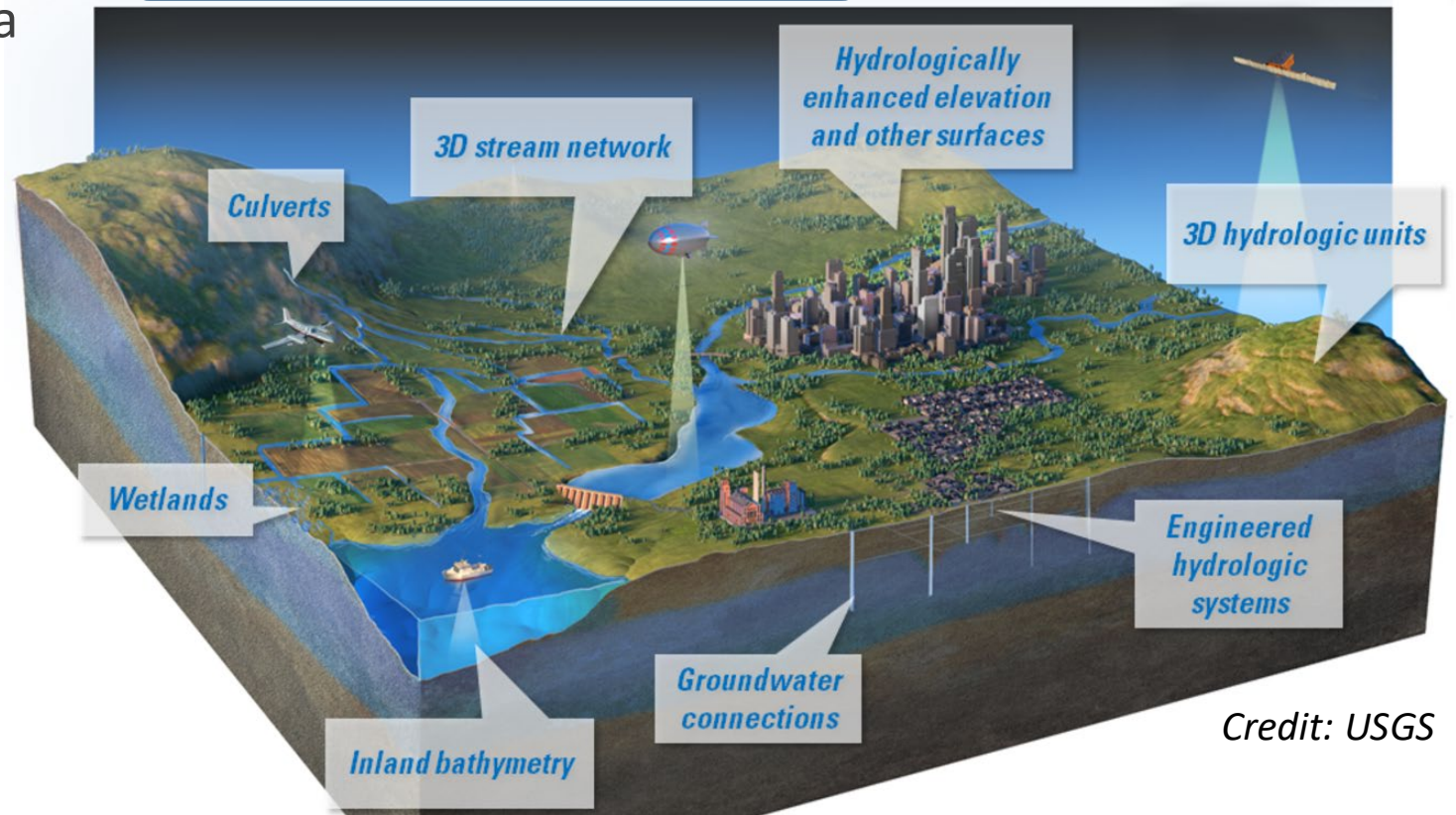
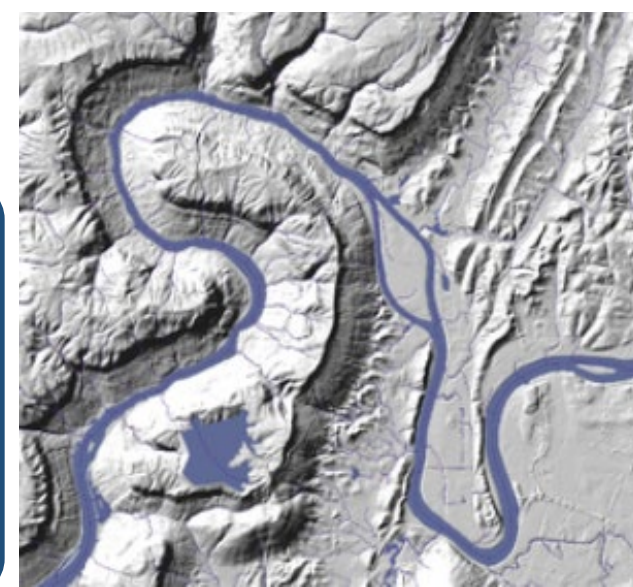
California State University **Chico**  
**North State Planning and  
Development Collective**

**Erik Fintel**  
Project Manager  
North State Planning and  
Development Collective  
Geographical Information Center  
CSU, Chico

# 3D Hydrography Program

- NHD, WBD, and NHDPlus have become static.
- USGS has transitioned to the 3D Hydrography Program.
- Hydrography derived from 3D Elevation Program (3DEP) LiDAR data
  - ✓ Elevation-Derived Hydrography: **EDH**
  - ✓ Data model + schema
  - ✓ Data specifications
- Improved spatial accuracy and feature density

High resolution elevation and bathymetry data and derived, high-fidelity hydrography and other data derivatives "***from the depths of our oceans to the peaks of our mountains.***"



Credit: USGS

# LiDAR for Hydrography Production

- USGS 3DEP LiDAR is Required
  - At Quality Level 2
  - Or at Quality Level 1
- Original Product Resolution DEMs
  - Used at/resampled to 1 meter resolution

**3DEP LidarExplorer** Search Process About LIDAR Type a lidar project name BASE MAP

Show Topobathy Lidar.

*Click on the map to retrieve information about a lidar project.*

Show options for filtering the lidar map display

[Hide Legend](#)

- Lidar Point Cloud QL0 (Approx.  $\leq 0.35\text{m}$  NPS)
- Lidar Point Cloud QL1 (Approx.  $0.35\text{m}$  NPS)
- Lidar Point Cloud QL2 (Approx.  $0.7\text{m}$  NPS)
- Lidar Point Cloud QL3 (Approx.  $1.4\text{m}$  NPS)
- Lidar Point Cloud Other

### Results

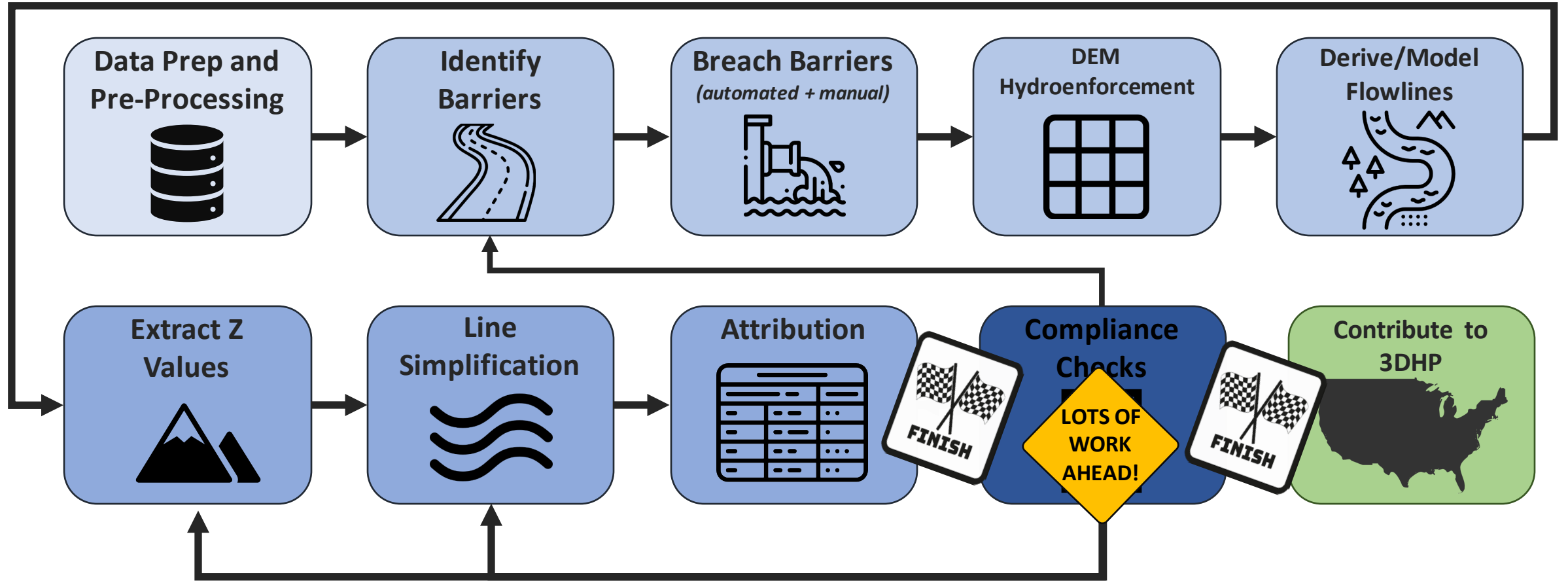
#### SELECTED LIDAR PROJECT(S)

CA Los Angeles 2016

Quality:	QL 2
Published:	2018/07/18
Collected:	2015/09/26 - 2016/10/17
Links:	<a href="#">LPC</a>   <a href="#">Source DEMs</a>   <a href="#">Metadata</a>
PMethod:	linear-mode lidar
Spec:	USGS Lidar Base Specification 1.2

USGS 3DEP LiDAR Explorer App

# Hydro Derivation Process



# Tools to Support EDH Workflow

Tool Group	Tool Name	Tool Source	Environment	Auto-Correction Component
Surface Prep	Geoid 18 Transformation	NOAA-Modified/Custom	Windows	N/A
GMI	GMI	ESRI/Arcpy/Whitebox/Custom	ArcPro	N/A
Auto Breach Tools	Breach Barrier	ESRI/Arcpy/Custom	ArcPro	N/A
	Identify Breach Areas	ESRI ArcHydro	ArcPro	N/A
	Create Breach Lines	ESRI ArcHydro	ArcPro	N/A
Derivation Tools	Derive Streams	ESRI/Arcpy/Custom	ArcPro	N/A
	Derive Stream as Line	ESRI	ArcPro	N/A
	Identify Flat Areas	ESRI ArcHydro	ArcPro	N/A
	Geomorphons	ESRI	ArcPro	N/A
	Burn Flat Polygons into DEM	ESRI ArcHydro	ArcPro	N/A
	Interpolate Shape	ESRI	ArcPro	N/A
Edit Tools	Drain Edits	ESRI/Arcpy/Custom	ArcPro	N/A
	Barriers	ESRI/Arcpy/Custom	ArcPro	N
	Desiccants	ESRI/Arcpy/Custom	ArcPro	N
	Seeds	ESRI/Arcpy/Custom	ArcPro	N
Compliance QA/QC	Short Segments	ESRI/Arcpy/Custom	ArcPro	Y
	Long Segments	ESRI/Arcpy/Custom	ArcPro	N
	Monotonicity	ESRI/Arcpy/Custom	ArcPro	Y
	Confluences	ESRI/Arcpy/Custom	ArcPro	Y
	GMI Compliance	ESRI/Arcpy/Whitebox/Custom	ArcPro	N
	Transects/Channel	ESRI/Arcpy/Custom	ArcPro	N
	DEM Faults	ESRI/Arcpy/Custom	ArcPro	N
	Density	ESRI/Arcpy/Custom	ArcPro	N
	NHD Omissions	ESRI/Arcpy/Custom	ArcPro	N
	Trace Network	ESRI	ArcPro	N



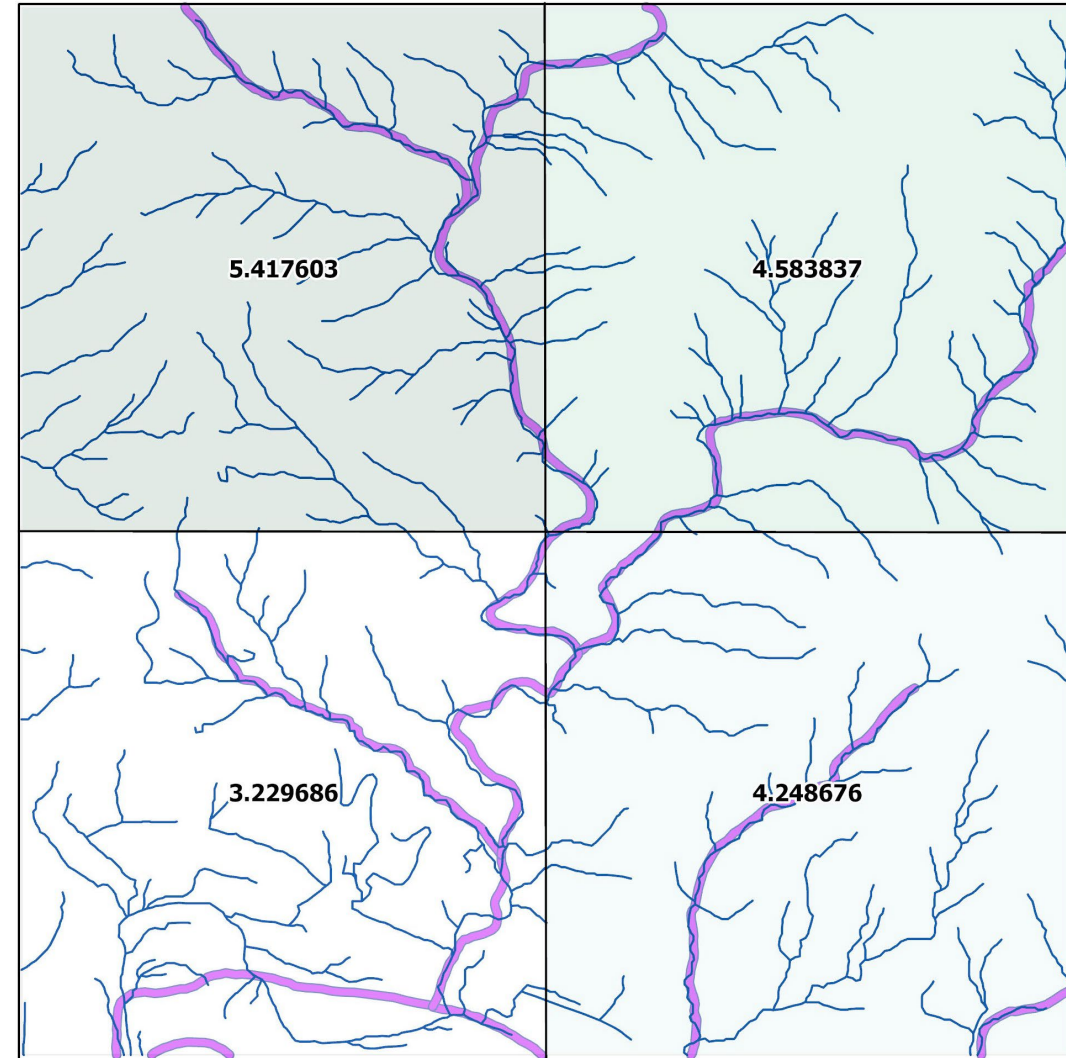
# EDH-NHD Density Comparison



## Density Visual Report

- EDH should be a **higher resolution** and **denser** than high resolution NHD.
- **Density increase in EDH should be between 3 and 5 times the density of NHD.**
- This tool reports by grid at 1 square mile per cell.
- Shows **EDH overlaid on NHD.**
- Reports **density ratio** increase in EDH.

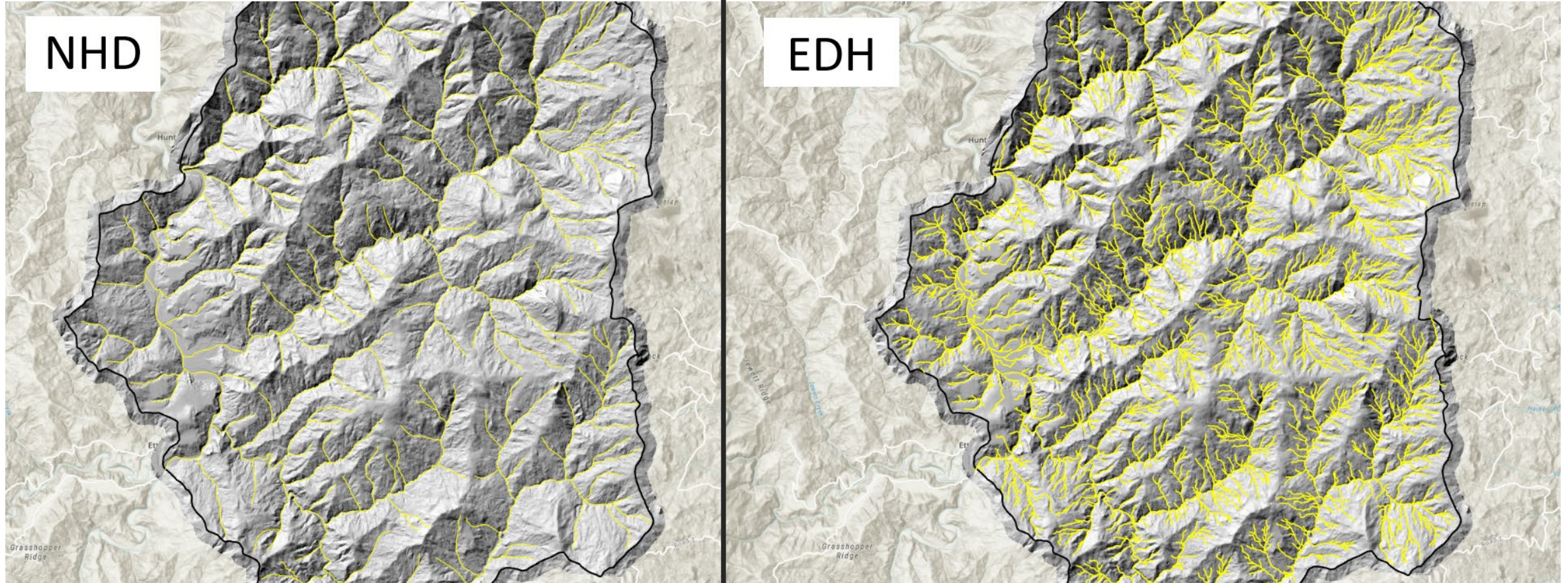
Flowline Density Ratio (EDH/NHD)



— EDH Flowlines — NHD Flowlines

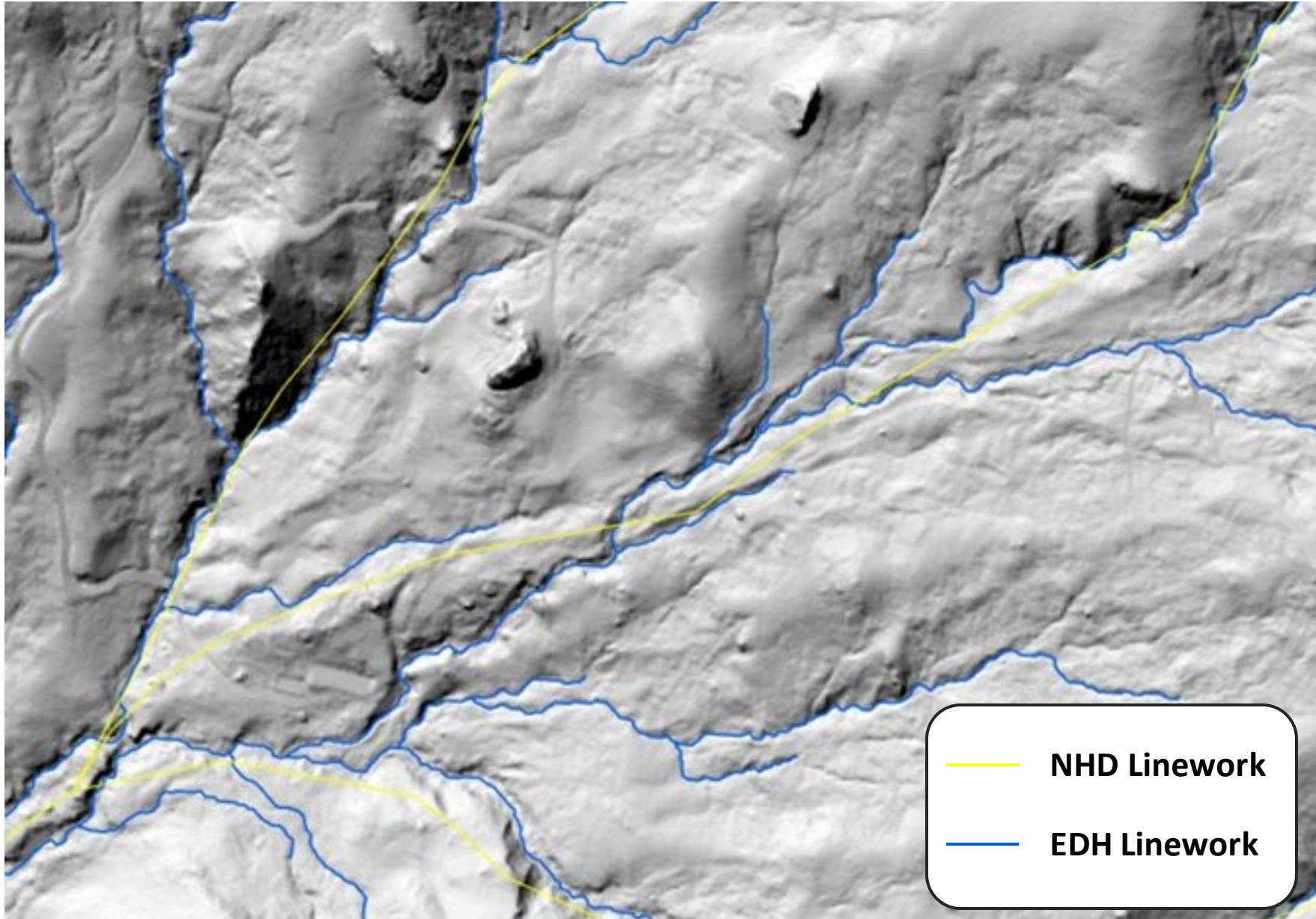


# EDH-NHD Density Comparison



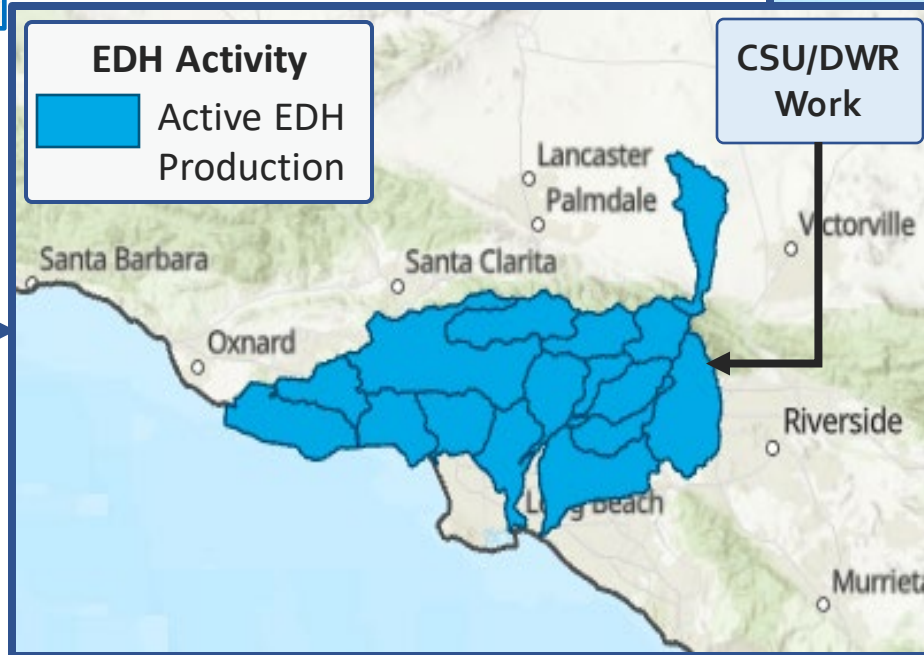


# EDH-NHD Accuracy Comparison



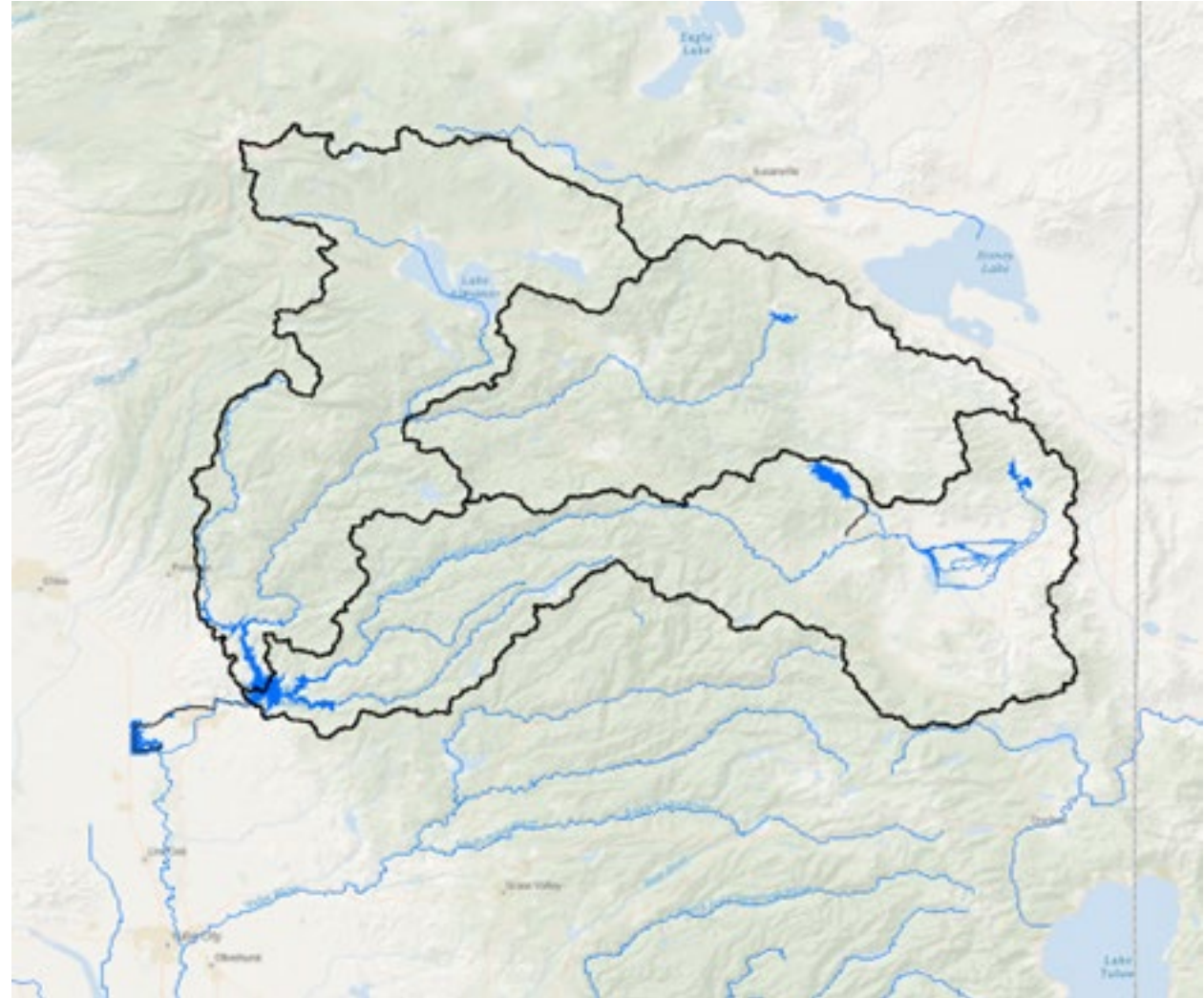


# California EDH Status



# Next Steps

- Submitted a DCA proposal for the Upper Feather River Watershed through USGS for 3DHP.
  - In collaboration with CA DWR (co-op agreement)
- Continue to work with USGS to meet their standards.
- Expand DWR EDH project areas.
- Continue outreach to work with others in the space.



# Thank you!



California State University **Chico**  
North State Planning and  
Development Collective

**Erik Fintel**

[efintel@csuchico.edu](mailto:efintel@csuchico.edu)

[Geographical Information Center](#)

North State Planning and Development Collective

CSU, Chico



CENTER FOR GEOSPATIAL  
SCIENCE & TECHNOLOGY  
California State University, Northridge

**Joel Osuna-Williams**

[joel.osuna@csun.edu](mailto:joel.osuna@csun.edu)

[Center for Geospatial Science & Technology](#)

CSU, Northridge



CALIFORNIA DEPARTMENT OF  
**WATER RESOURCES**

**Jane Schafer-Kramer**

[jane.schafer-kramer@water.ca.gov](mailto:jane.schafer-kramer@water.ca.gov)

[Department of Water Resources](#)