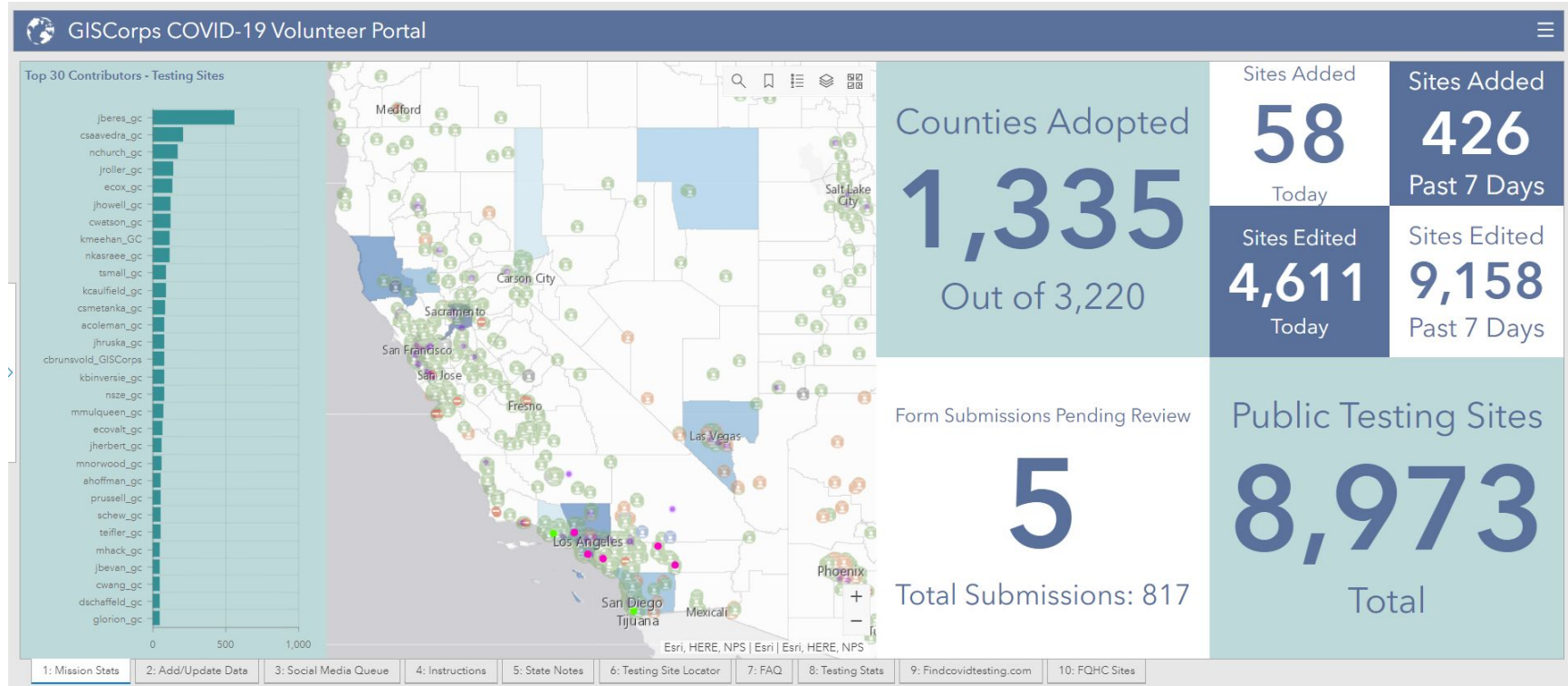


GISCorps COVID-19 Testing Sites Project



Volunteer effort to compile a nationwide COVID-19 testing site layer in partnership with Esri's Disaster Response Program.



GISCorps COVID-19 Testing Sites Project



GISCorps COVID-19 Volunteer Portal

Update Data - Zoom into your area of interest to start

Search for Site or Address

Testing Sites	
Name of Facility	Calaveras County Fairgrounds
Full Address	2465 Gunclub Rd, Angels Camp, Ca
Municipality	Angels Camp
Status	Operational
Owner Name	OptumServe
Owner Type	Private
Facility Type	Outdoor/Tent

Edit

Select a template to create features

Testing Sites

- Public Submissions Pending Review
- Batch Upload Pending Review
- Missing Data - Please Complete
- Operational
- Scheduled to Open
- Impacted
- Testing Restricted
- Scheduled to Close
- Temporarily Closed
- Permanently Closed
- Permanently Closed
- Not Publicly Shared

POWERED BY esri

1:18056

Esri | Map data © OpenStreetMap contributors, CC-BY-SA

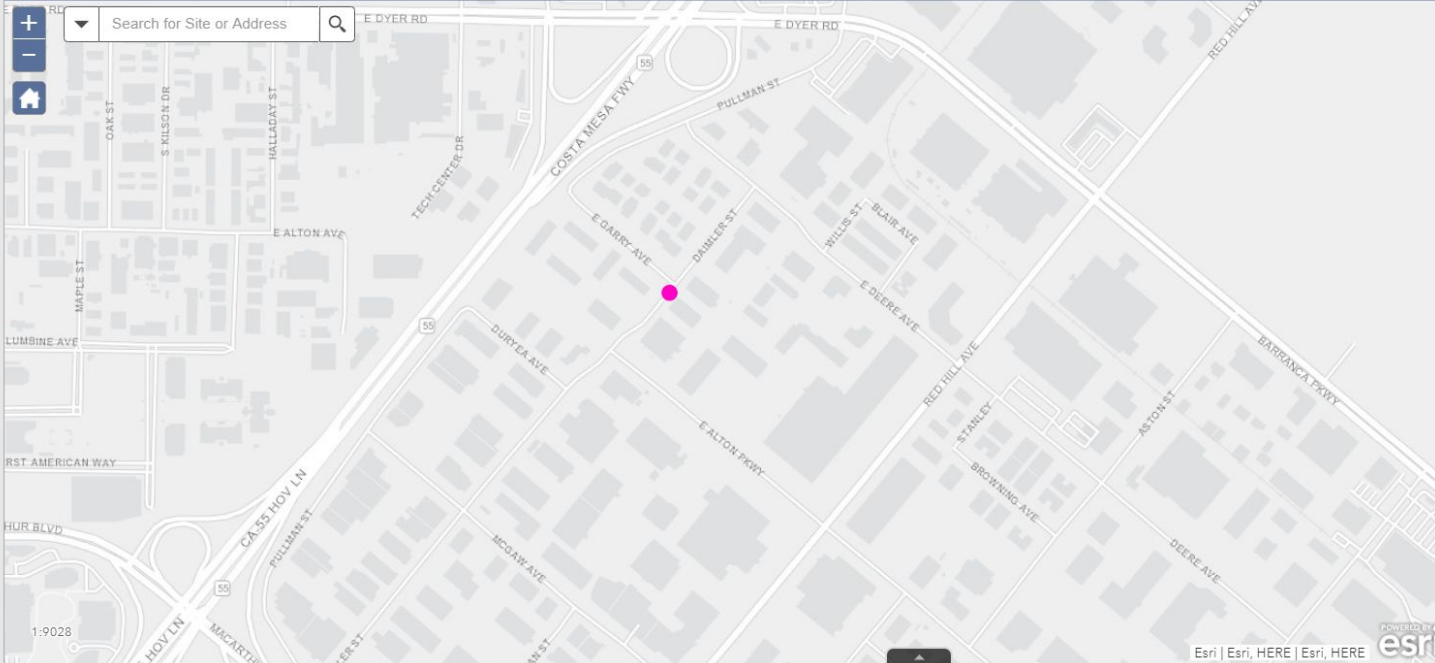
- 1: Mission Stats
- 2: Add/Update Data
- 3: Social Media Queue
- 4: Instructions
- 5: State Notes
- 6: Testing Site Locator
- 7: FAQ
- 8: Testing Stats
- 9: Findcovidtesting.com
- 10: FQHC Sites

GISCorps COVID-19 Testing Sites Project



GISCorps COVID-19 Volunteer Portal

Update Data - Zoom into your area of interest to start



Filter

Enter all or part of an owner name (not case sensitive)

Filter by Test Type

Select one or more categories

0 selected

- Public Form Submissions Pending Review
- Test Type Needs More Research
- Batch Uploads Pending Review
- Counties not edited in 14 days
- Counties not edited in 7 days
- Red Flag flagged sites
- Fine Print flagged sites
- Needs a test type
- Sites scheduled to begin testing with no start date (use this to see unprocessed)

GISCorps COVID-19 Testing Sites Project



GISCorps COVID-19 Volunteer Portal



FQHC Testing Site Data ☆

File Edit View Insert Format Data Tools Add-ons Help Last edit was yesterday at 4:05 PM



Share



Instructions:

	B	C	D	E	F	G	H	I	J	K	L
1	Instructions:	"Check out" all the sites for a single owner by adding your initials to Column B. Visit the owner website and try to figure out which locations are offering testing. For locations not offering testing, please enter "No" in Column C. For sites that are offering testing, enter "Yes" in Column C and fill out as many other fields as possible. When Column C is complete for every site in the state, we will add them all to the map at once. Sites already on our map do not appear in this list.									
2	Volunteer Initials	Testing?	Note	Owner Name	Facility ID	Name of Facility	Full Address	Municipality	Owner Type	Public Phone Number	Website

[More Information Here](#)

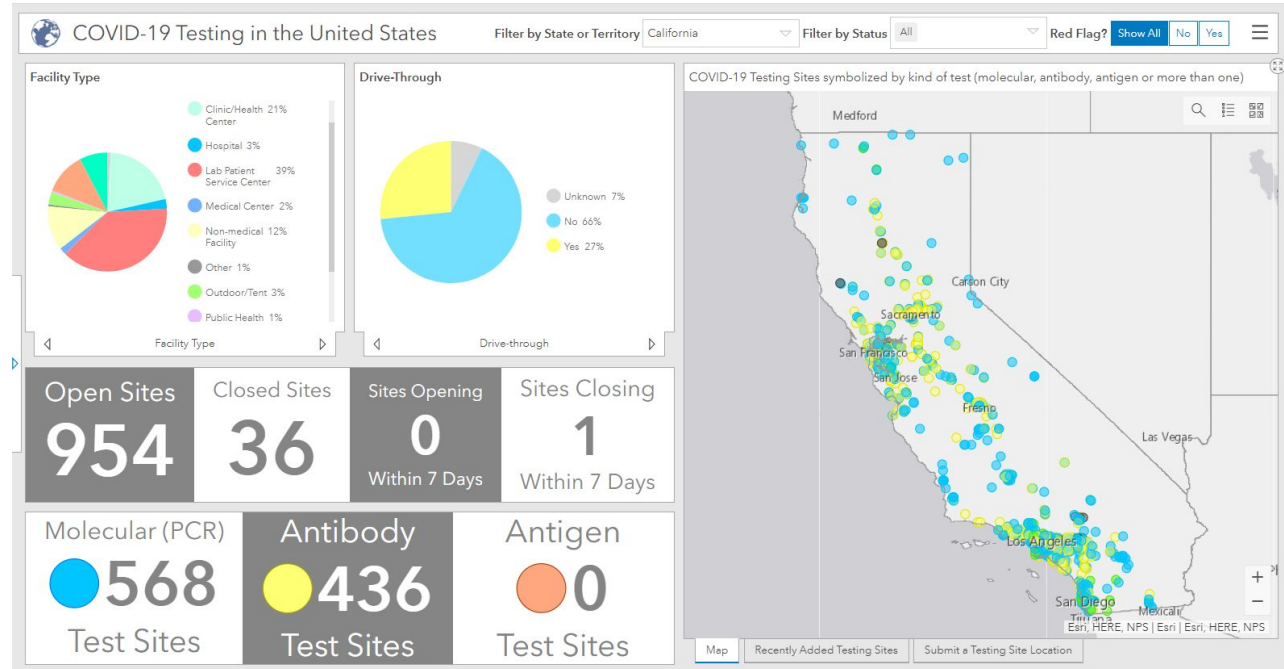
120				Little River Medical Ce	5628	LRMC Health Access	1075 Mr Joe White Ave Unit 101	Myrtle Beach	Non Profit		http://www.lrmcenter.com
121				Little River Medical Ce	5629	LRMC- Mobile Van #1	4303 Live Oak Dr	Little River	Non Profit		http://www.lrmcenter.com/
122				Little River Medical Ce	5630	LRMC-Mobile Van #2	4303 Live Oak Dr	Little River	Non Profit		http://www.lrmcenter.com
123				Little River Medical Ce	5631	LRMC-Mobile Van #3	4303 Live Oak Dr	Little River	Non Profit		
124				Little River Medical Ce	5632	LRMC: MYRTLE BEACH MEDICAL CENTER	7724 N Kings Hwy	Myrtle Beach	Non Profit		http://www.lrmcenter.com/
125				Little River Medical Ce	5633	SouthStrand Medical Center	3236 Holmestown Rd	Myrtle Beach	Non Profit		http://www.lrmcenter.com
126				Low Country Health Ca	5634	BARNWELL FAMILY MEDICINE	86 Wren St	Barnwell	Non Profit		http://www.lowcountryhealthcares
127				Low Country Health Ca	5635	Family Medical Center of Blackville	130 Baker St N	Blackville	Non Profit		
128				Low Country Health Ca	5636	LOW COUNTRY HEALTH CARE SYSTEM	333 Revolutionary Trl	Fairfax	Non Profit		http://www.lowcountryhealthcares
129				Low Country Health Ca	5637	Low Country Health Care System, Inc. dba Barnwell Pediatric	10706 Marlboro Ave	Barnwell	Non Profit		http://www.lowcountryhealthcares
130				Low Country Health Ca	5638	Low Country Health Care System, Inc. dba Padgett Family Pr	526 North St	Bamberg	Non Profit		
131				Low Country Health Ca	5639	Low Country Health Care System, Inc. Early Intervention Ser	185 Mcgee St	Bamberg	Non Profit		http://www.lowcountryhealthcares
132				Low Country Health Ca	5640	Williston Family Medicine	13975 Church St	Williston	Non Profit		http://www.lowcountryhealthcares
133	NS	No		New Horizon Family H	5641	C A R E Team Express Mobile Medical Unit	111A Berry Ave	Greer	Non Profit		http://www.newhorizonfhs.org
134	NS	No		New Horizon Family H	5642	GREER	111 Berry Ave # A	Greer	Non Profit		http://www.newhorizonfhs.org
135	NS	No		New Horizon Family H	5643	TRAVELERS REST	1588 Geer Hwy	Travelers Rest	Non Profit		http://www.newhorizonfhs.org
136				Regenesis Health Care	5644	ReGenesis Health Care - Administration/Family Medicine	460 Langdon St	Spartanburg	Non Profit		http://www.myrhc.org

+ ☰ FQHC Testing Sites For Review ▾ AK & AZ ▾ Complete ▾

- 1: Mission Stats
- 2: Add/Update Data
- 3: Social Media Queue
- 4: Instructions
- 5: State Notes
- 6: Testing Site Locator
- 7: FAQ
- 8: Testing Stats
- 9: Findcovidtesting.com
- 10: FQHC Sites

Stats

- Data created by 275 volunteers
- About 9,000 public testing sites so far
- 800+ submissions via our public Survey123 form
- Lots of bulk data imports
- Averaging around 300K requests per day with a one-day record of 1.1M requests.





Links

- GISCorps Resources Hub: <https://covid-19-giscorps.hub.arcgis.com/>
- Public Testing Site Locator app: <https://bit.ly/2QTtlgS>
- COVID-19 Testing in the United States dashboard: <https://arcg.is/10mj4C>
- Public form for adding or updating testing sites: <https://arcg.is/10S1ib>
- GISCorps Website: www.giscorps.org