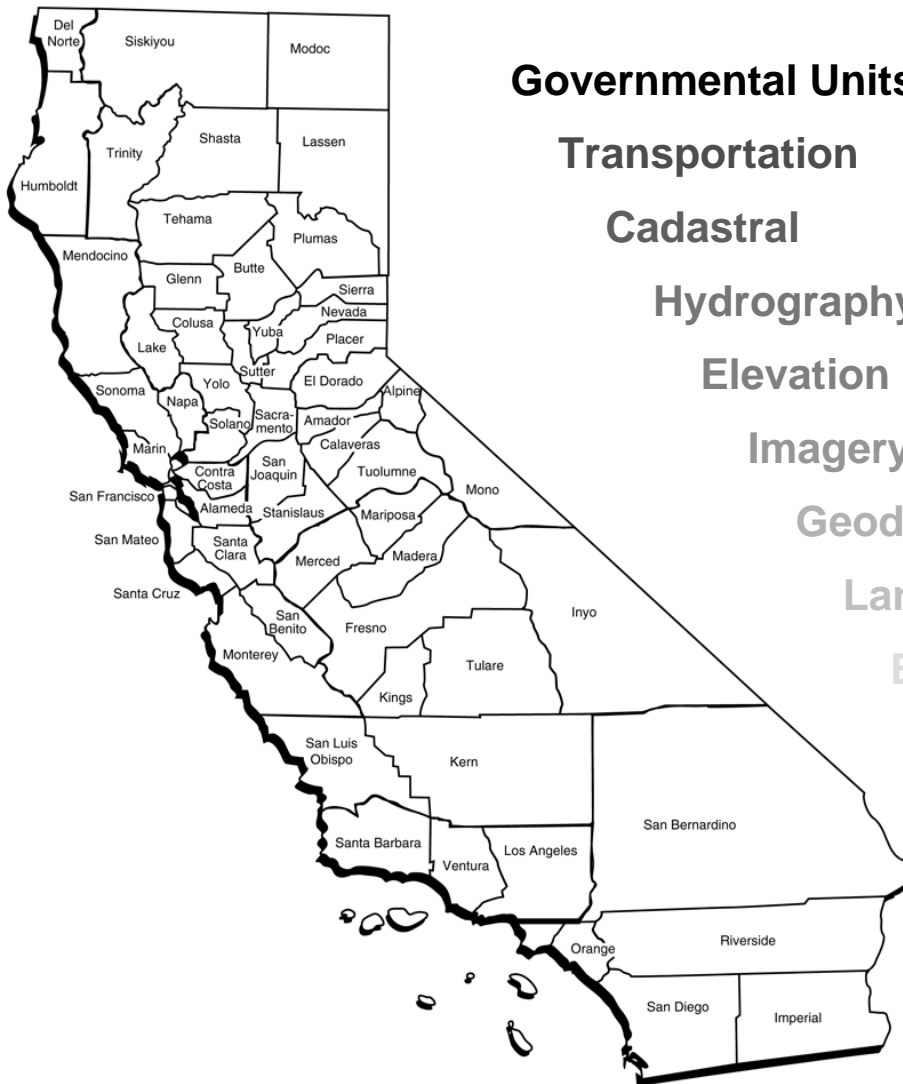


WORKSHOP 4 SUMMARY

FOR

CALIFORNIA GEOSPATIAL FRAMEWORK DRAFT DATA PLAN

July 11, 2006



Governmental Units

Transportation

Cadastral

Hydrography

Elevation

Imagery

Geodetic Control

Land Use/Land Cover

Environmental

Emergency Operations

Submitted To:

California Geographic Information Association
1440 Broadway Street, Suite 800
Oakland, CA 94612

Baker

ChallengeUs.

Submitted By:

Michael Baker Jr., Inc.
1300 Clay St. Suite 810
Oakland, CA 94612

The fourth outreach workshop for the California Geospatial Framework Draft Data Plan was held on Thursday, June 29, 2006 in Oakland. The NSDI data themes were presented as potential California-centric themes and participants were asked to allocate their five selection votes among their top choices.

The majority of the fourteen workshop participants came from local or regional agencies and private companies. There was limited state and federal agency representation.

Based on participant voting (funding allocation), several data themes emerged as clear contenders as California-centric themes: Buildings and Facilities, Vegetation, Climate, Earth Cover, Flood Hazards, Street Addressing, and Cultural and Demographic Statistics. No themes overlap among this and the three previous workshops.

See Figure 1 for the total votes for each potential California-centric theme for the fourth workshop. Figures 2, 3, 4, and 5 show the number of votes from local/regional, state, federal, and private interests, respectively. Figure 6 shows the number of votes for the framework data themes.

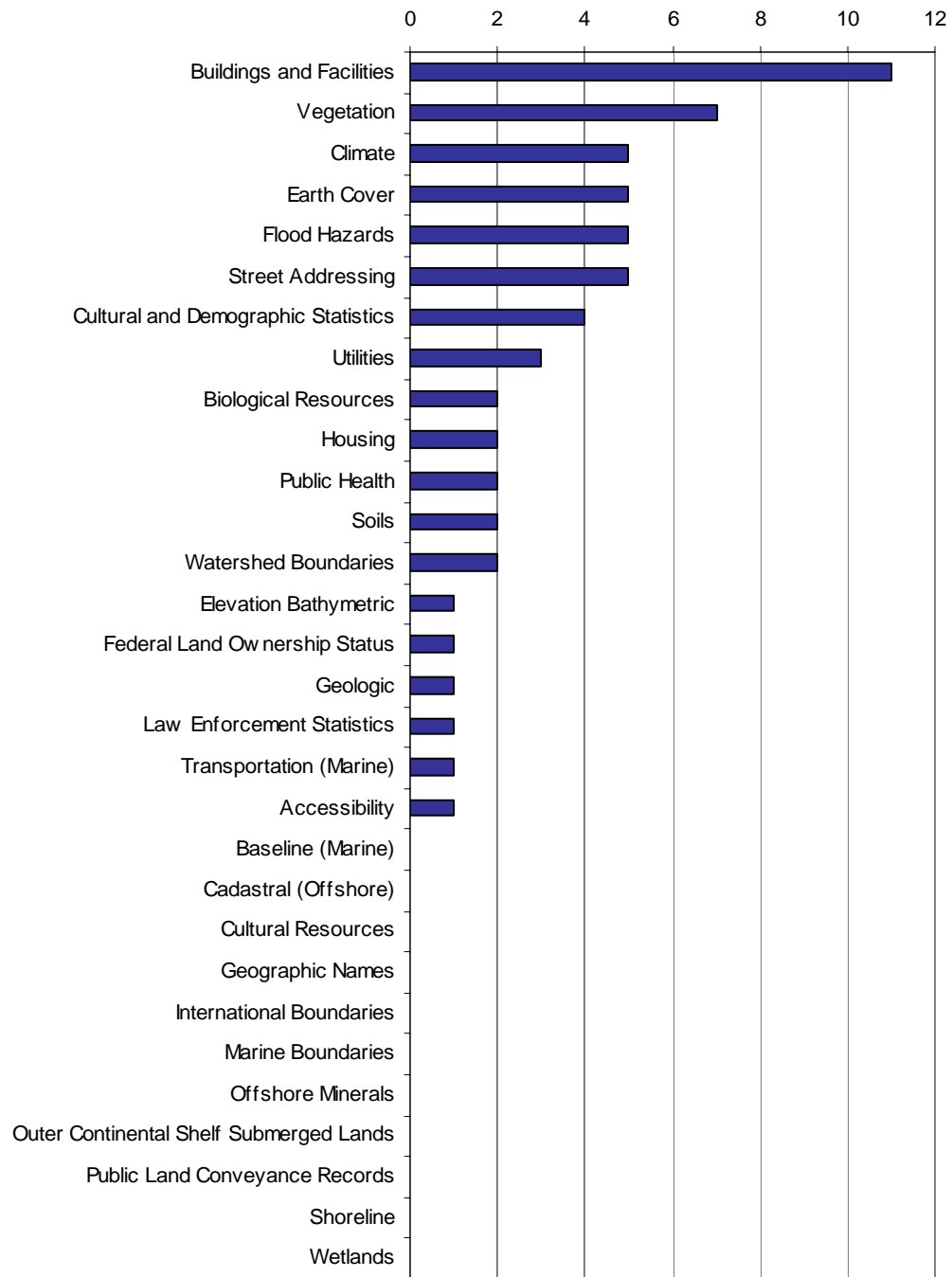


Figure 1. Total votes for California-centric themes

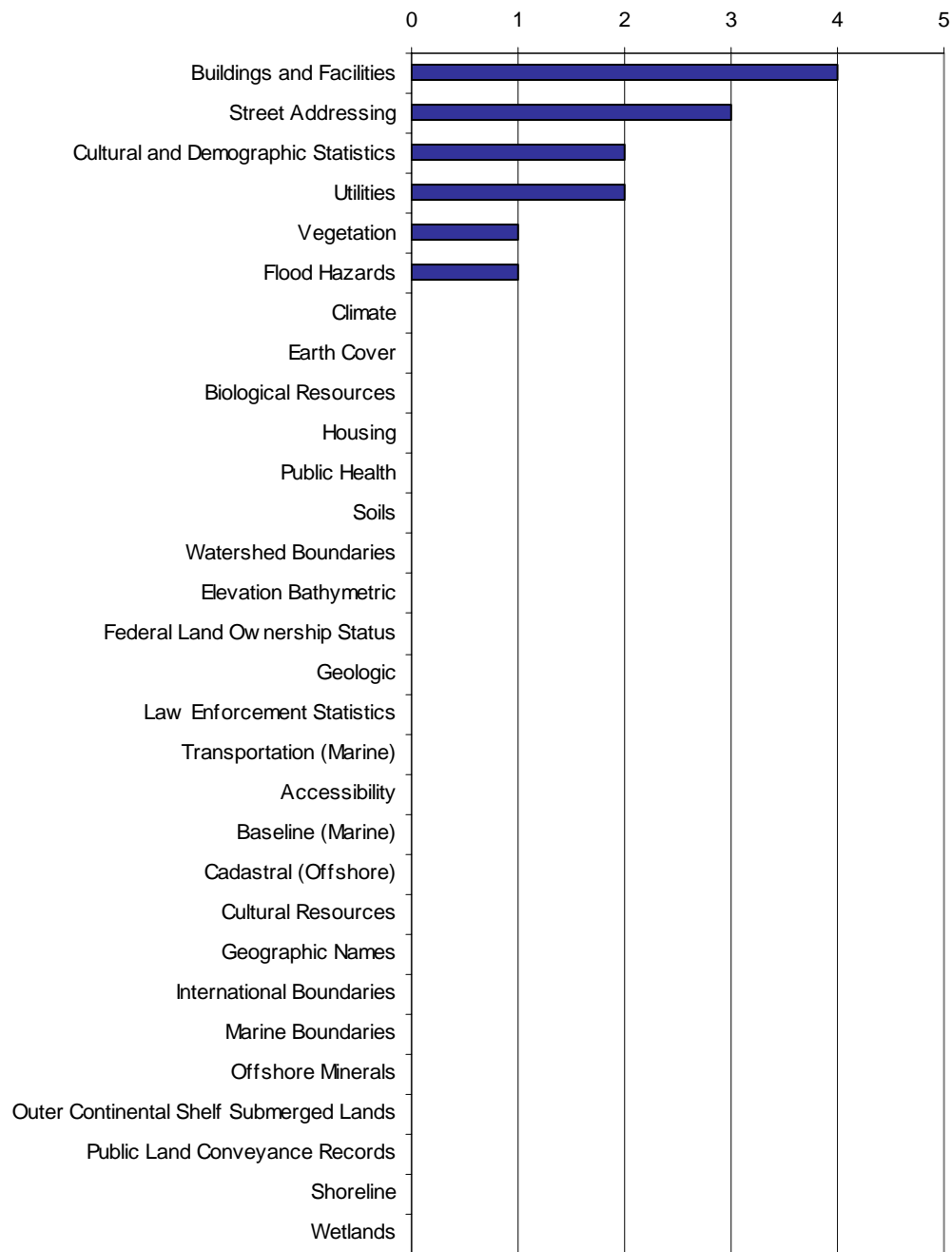


Figure 2. Local government votes for California-centric themes

State Government Votes for California-Centric Themes

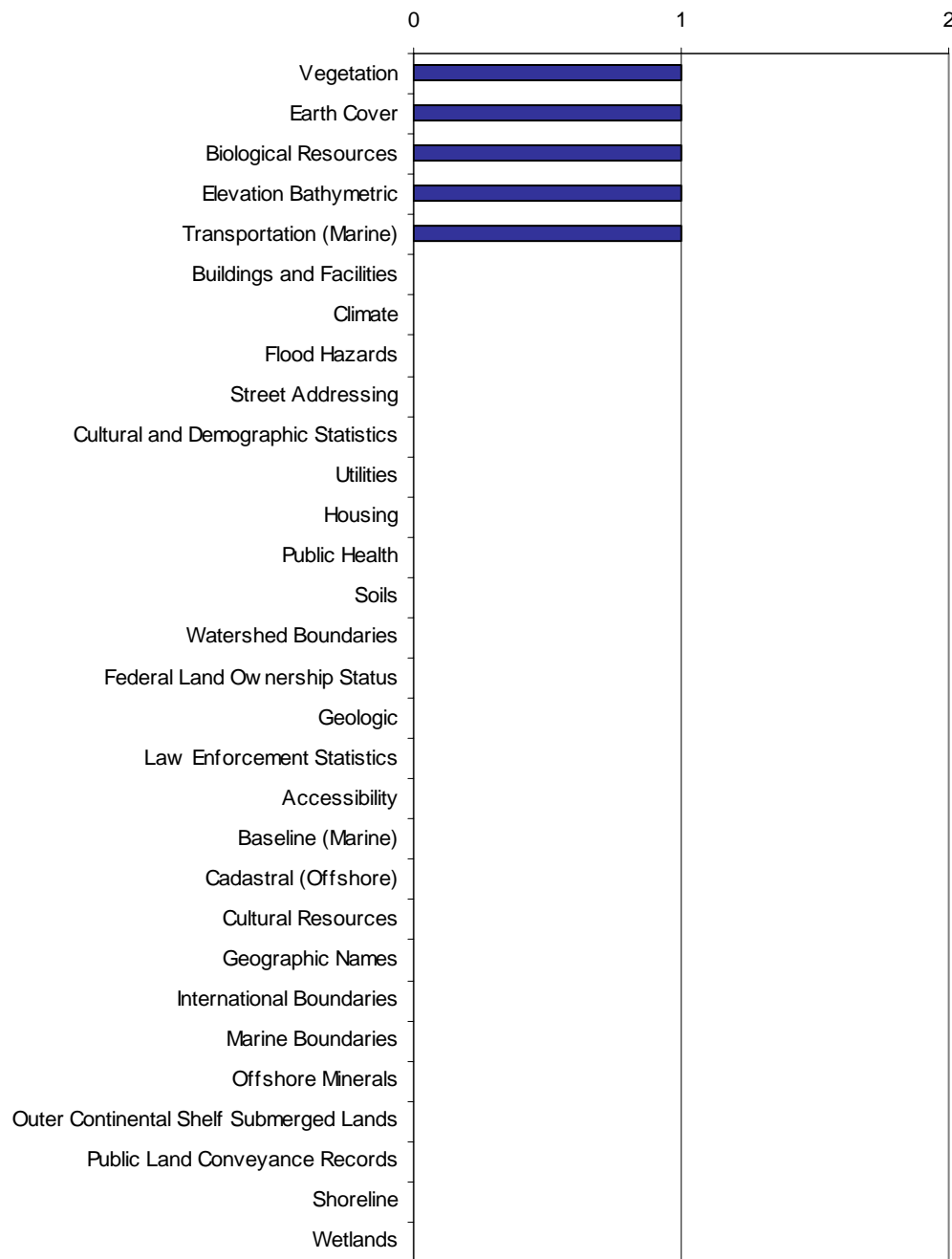


Figure 3. State government votes for California-centric themes

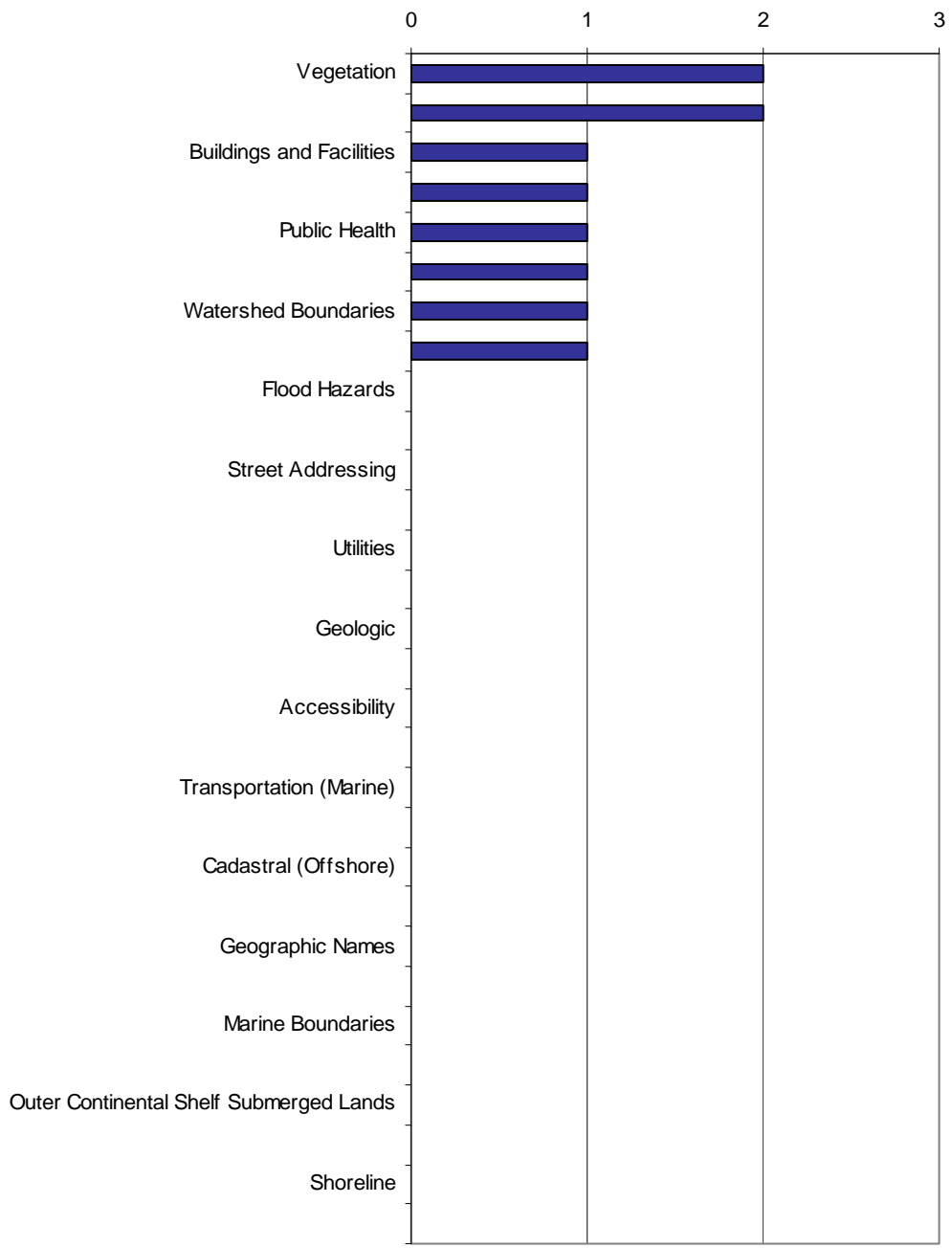


Figure 4. Federal government votes for California-centric themes

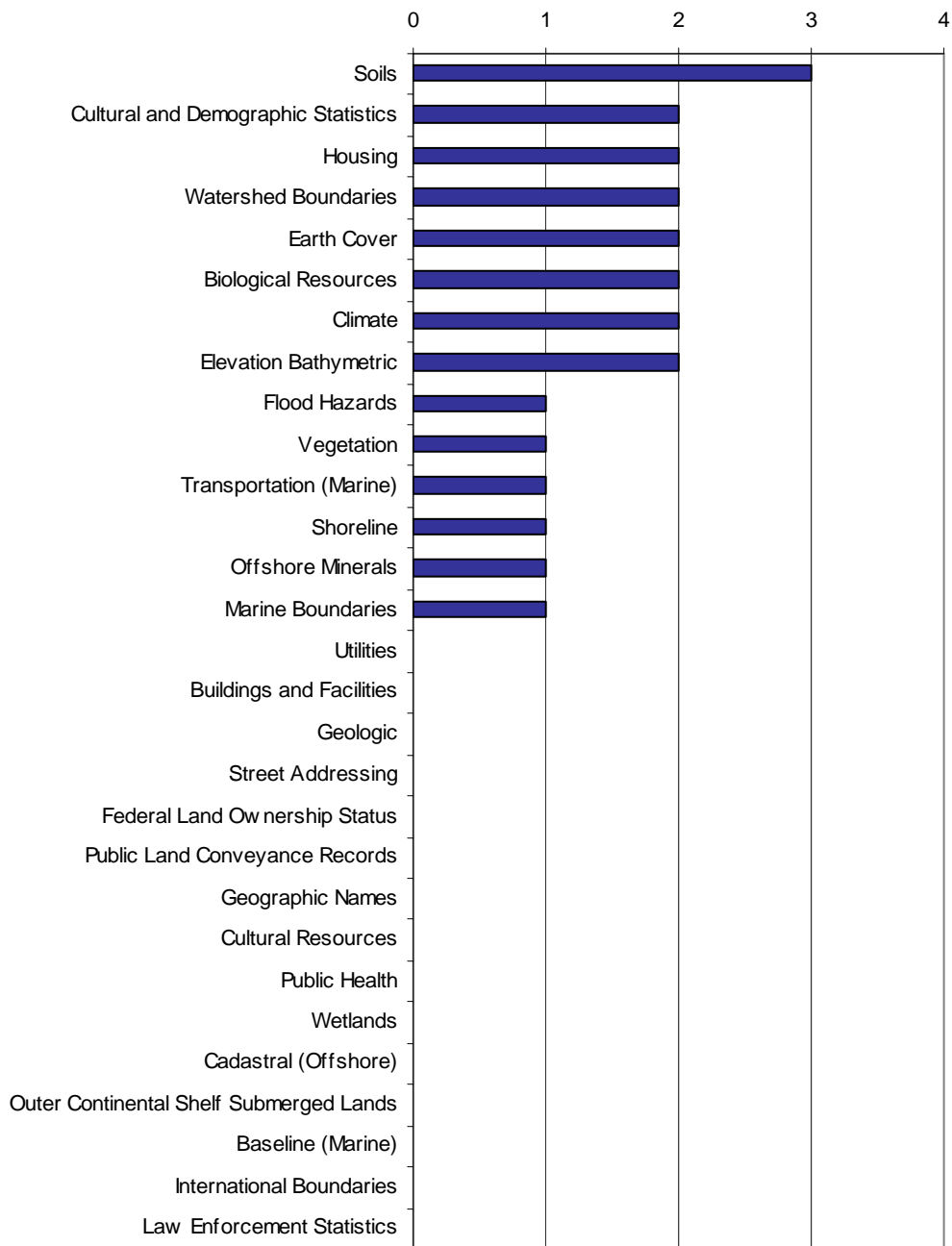


Figure 5. Private interest votes for California-centric themes

Participants were also asked to use one vote to prioritize the core data themes. The results are shown below:

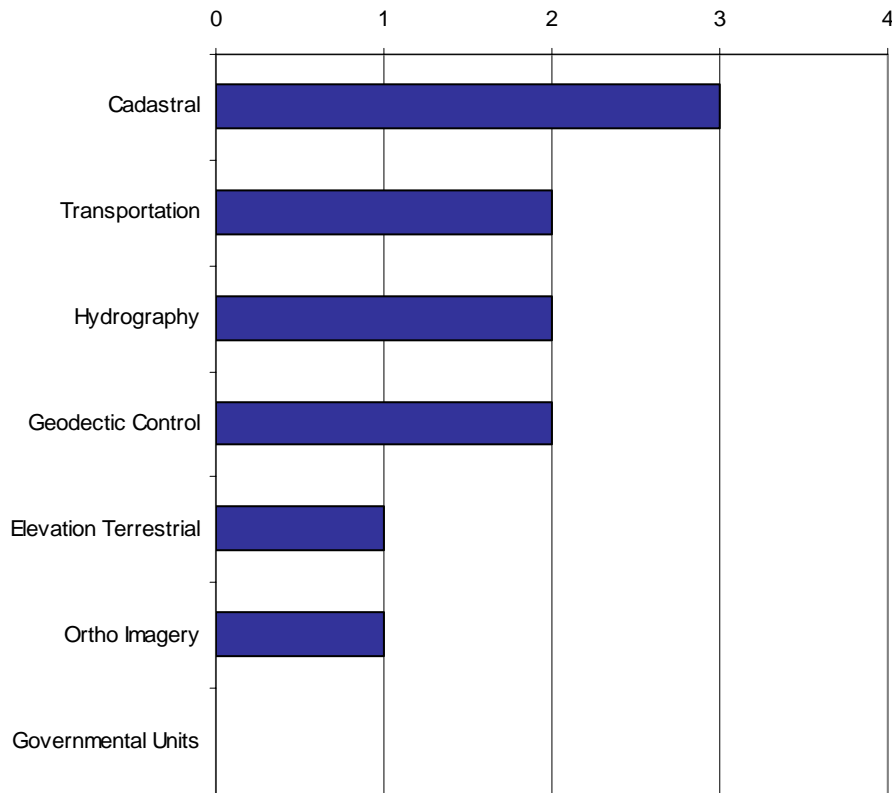


Figure 6. Total votes for core framework data themes

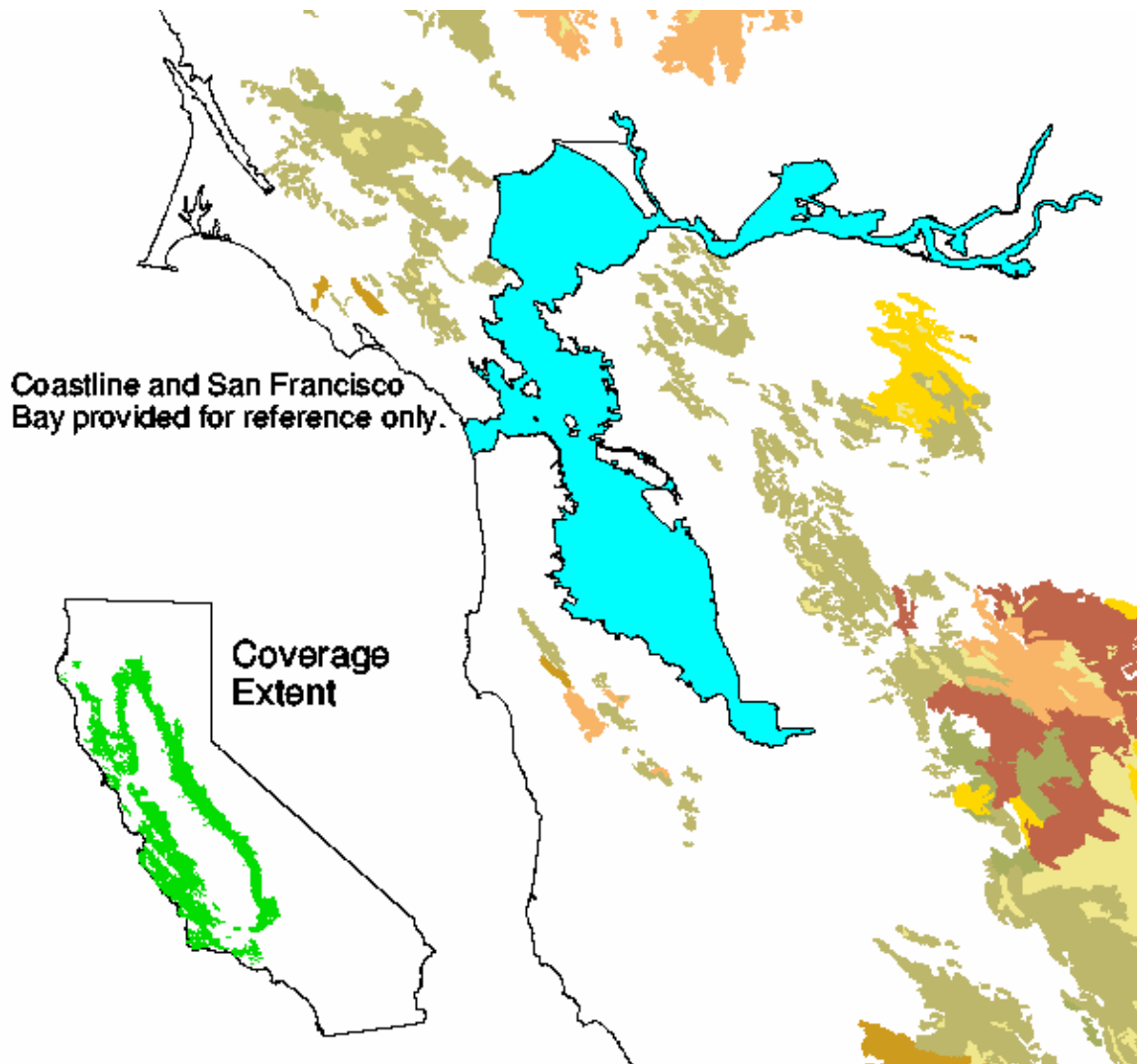
Notes from the fourth workshop follow. They have been captured into a generic Draft Data Plan template. Results and subsequent research will be consolidated into the Draft Data Plan. Data themes are sorted most votes to fewest. *Italic fonts indicate information that was collected through research based on input from workshop participants.*

Workshop participants, please send your comments, corrections, and additional information to: CAGeoFrame@mbakercorp.com.

CALIFORNIA-CENTRIC THEMES

BUILDINGS AND FACILITIES	
THEME DESCRIPTION	<i>To be completed for Draft Data Plan.</i>
THEME USES	Identifying low density areas for urban infill, emergency management services, siting public transportation, and inventory of campus facilities.
RELATIONSHIP TO OTHER DATA THEMES	Street addressing, utilities, and cadastral
SOURCE OF DATA	This data is generally maintained at the county level. Building permits are a potential source. Risk management insures may be a private source of data.
STATUS	<i>To be completed for Draft Data Plan.</i>
STANDARDS	<i>To be completed for Draft Data Plan.</i>
PRIMARY DATA USERS & STAKEHOLDERS	<i>To be completed for Draft Data Plan.</i>
POTENTIAL DATA HOSTS	<i>To be completed for Draft Data Plan.</i>
COMMENTS	<i>To be completed for Draft Data Plan.</i>

VEGETATION

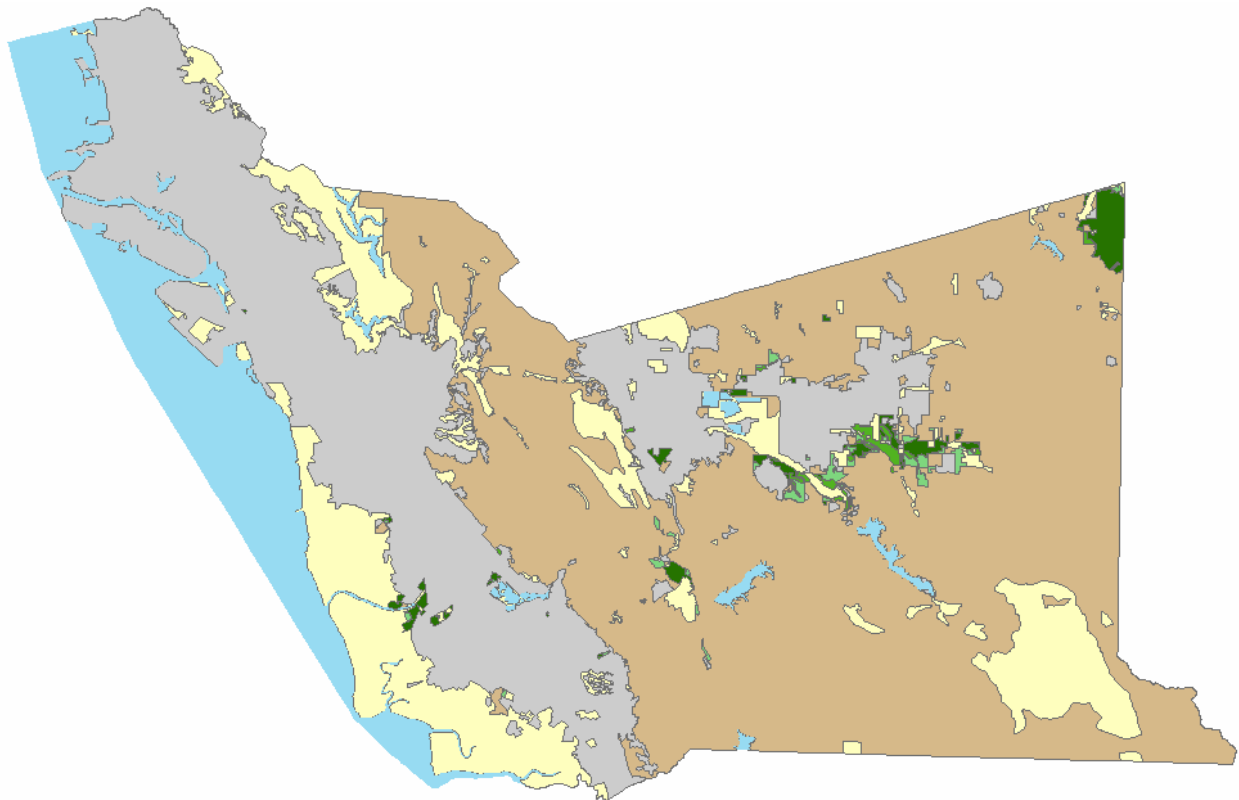


THEME DESCRIPTION	<i>To be completed for Draft Data Plan.</i>
THEME USES	Habitat suitability analysis, tree maintenance, and planning.
RELATIONSHIP TO OTHER DATA THEMES	Elevation, soils, climate, buildings and facilities
SOURCE OF DATA	The California Department of Forestry and Fire Protection (CDF) Fire and Resource Assessment Program (FRAP) has downloadable vegetation data derived from LANDSAT imagery every 5 years. Some gaps are filled by NLC (USGS).
STATUS	<i>FRAP data can be found at http://frap.cdf.ca.gov.</i>

VEGETATION	
STANDARDS	<i>To be completed for Draft Data Plan.</i>
PRIMARY DATA USERS & STAKEHOLDERS	<i>To be completed for Draft Data Plan.</i>
POTENTIAL DATA HOSTS	<i>To be completed for Draft Data Plan.</i>
COMMENTS	<i>To be completed for Draft Data Plan.</i>

CLIMATE	
THEME DESCRIPTION	<i>To be completed for Draft Data Plan.</i>
THEME USES	Species prediction distribution models, real estate (info for buyers), water conservation (zero-scaping), fire behavior modeling, and construction planning.
RELATIONSHIP TO OTHER DATA THEMES	<i>To be completed for Draft Data Plan.</i>
SOURCE OF DATA	WorldClim is a free online source of interpolated climate data for 1950 through 1990 with a spatial resolution of one square kilometer. Permission is required for redistribution or commercial use of WorldClim data. NASA and NOAA are potential sources of higher resolution climate data.
STATUS	<i>WorldClim can be found at http://www.worldclim.org.</i>
STANDARDS	<i>To be completed for Draft Data Plan.</i>
PRIMARY DATA USERS & STAKEHOLDERS	<i>To be completed for Draft Data Plan.</i>
POTENTIAL DATA HOSTS	<i>To be completed for Draft Data Plan.</i>
COMMENTS	This is a very local issue and it is hard to track even at the county level.

EARTH COVER



THEME DESCRIPTION	<i>To be completed for Draft Data Plan.</i>
THEME USES	Habitat suitability analysis and areas of endoism.
RELATIONSHIP TO OTHER DATA THEMES	<i>To be completed for Draft Data Plan.</i>
SOURCE OF DATA	Earth cover data is generally derived from LANDSAT. ESRI's Digital Chart of the World has earth cover data from the early 1990s, which is of limited use. The California Department of Conservation has a Farm Mapping and Monitoring Program (FMMP) that includes earth cover among its data layers. The FMMP tries to track how agricultural land is being taken up by other uses. The data are free to download.
STATUS	<i>FMMP data can be found at http://www.consrv.ca.gov/DLRP/fmmp/index.htm</i>
STANDARDS	<i>To be completed for Draft Data Plan.</i>
PRIMARY DATA USERS & STAKEHOLDERS	<i>To be completed for Draft Data Plan.</i>
POTENTIAL DATA	<i>To be completed for Draft Data Plan.</i>

EARTH COVER	
HOSTS	
COMMENTS	<i>To be completed for Draft Data Plan.</i>

STREET ADDRESSING	
THEME DESCRIPTION	<i>To be completed for Draft Data Plan.</i>
THEME USES	E-911
RELATIONSHIP TO OTHER DATA THEMES	Buildings and facilities, and transportation
SOURCE OF DATA	Phone companies have data that they do not share with the public. Most street addressing data is from third-party commercial resources. The Metropolitan Transportation Commission (MTC) was trying to collect this data at the regional level by licensing commercial datasets. The Alameda County Sheriff is creating point address data for the county.
STATUS	<i>To be completed for Draft Data Plan.</i>
STANDARDS	<i>To be completed for Draft Data Plan.</i>
PRIMARY DATA USERS & STAKEHOLDERS	<i>To be completed for Draft Data Plan.</i>
POTENTIAL DATA HOSTS	<i>To be completed for Draft Data Plan.</i>
COMMENTS	<i>To be completed for Draft Data Plan.</i>

FLOOD HAZARDS

The screenshot displays the FEMA Mapping Information Platform interface. At the top, it says 'Mapping INFORMATION PLATFORM' with the FEMA logo. Below that is a navigation bar with links like 'Home', 'Map Modernization', 'News & Events', 'Tools & Links', 'Learning', 'Map Viewer', and 'Contact Center'. The main content area is titled 'Map Viewer' and includes a 'Geocoder' on the left where 'santa barbara' is entered. The map itself shows a coastal area with various flood hazard zones labeled 'VE' and 'AE'. A 'Map Legend' on the right shows checked boxes for 'Flood Data', 'Hazards', 'Imagery', and 'Basemap Layers'. Below the map is a 'DFIRM View' button and 'Advisory Map Information' text.

THEME DESCRIPTION	<i>To be completed for Draft Data Plan.</i>
THEME USES	Flood insurance, conservation reserve program, construction, dam inundation areas, and mitigation
RELATIONSHIP TO OTHER DATA THEMES	Elevation, cadastral, and buildings and facilities
SOURCE OF DATA	FEMA is the main source for flood hazard data.
STATUS	<i>To be completed for Draft Data Plan.</i>
STANDARDS	<i>To be completed for Draft Data Plan.</i>
PRIMARY DATA USERS & STAKEHOLDERS	<i>To be completed for Draft Data Plan.</i>
POTENTIAL DATA HOSTS	<i>To be completed for Draft Data Plan.</i>
COMMENTS	<i>To be completed for Draft Data Plan.</i>

CORE FRAMEWORK THEMES

CULTURAL AND DEMOGRAPHIC STATISTICS

THEME DESCRIPTION	<i>To be completed for Draft Data Plan.</i>
THEME USES	Public Transit
RELATIONSHIP TO OTHER DATA THEMES	Buildings and Facilities
SOURCE OF DATA	The US Census is the main source for this data.
STATUS	<i>Census data can be downloaded from American FactFinder: http://factfinder.census.gov</i>
STANDARDS	<i>To be completed for Draft Data Plan.</i>

CULTURAL AND DEMOGRAPHIC STATISTICS	
PRIMARY DATA USERS & STAKEHOLDERS	<i>To be completed for Draft Data Plan.</i>
POTENTIAL DATA HOSTS	<i>To be completed for Draft Data Plan.</i>
COMMENTS	<i>To be completed for Draft Data Plan.</i>