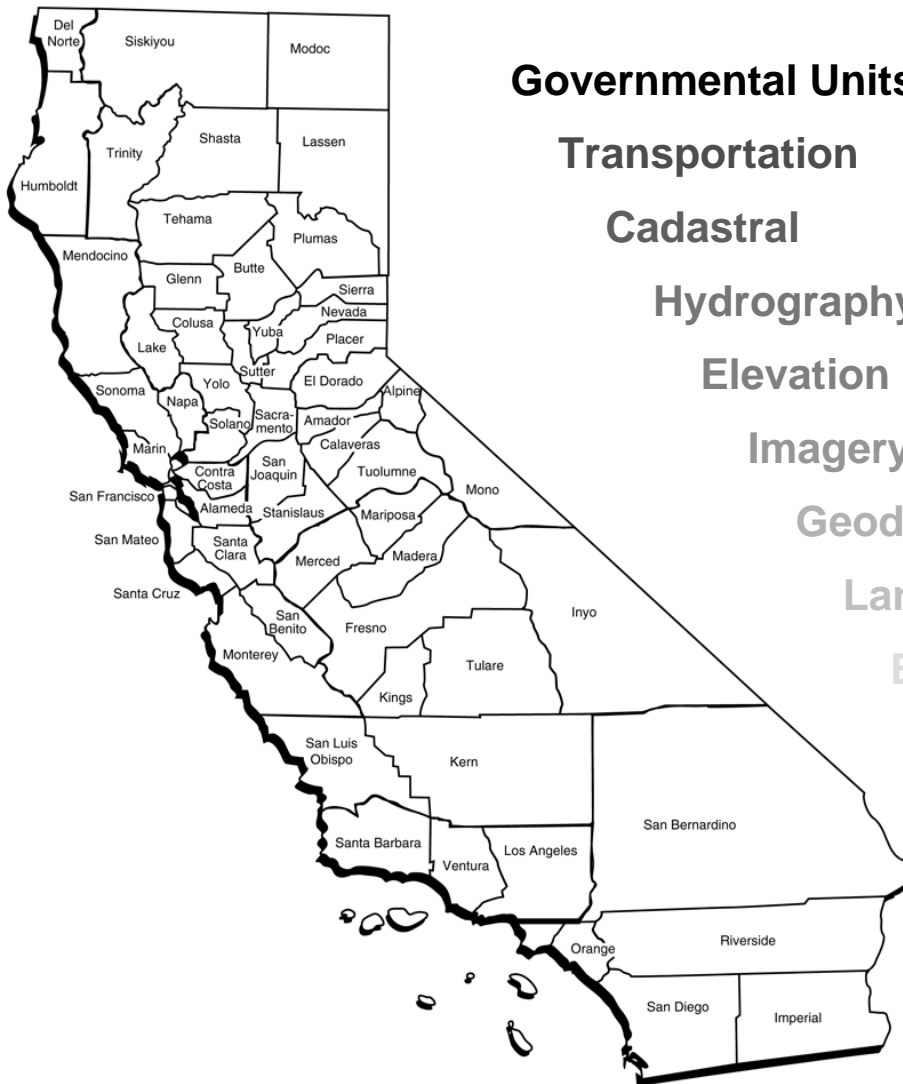


WORKSHOP 3 SUMMARY

FOR

CALIFORNIA GEOSPATIAL FRAMEWORK DRAFT DATA PLAN

June 5, 2006



Governmental Units

Transportation

Cadastral

Hydrography

Elevation

Imagery

Geodetic Control

Land Use/Land Cover

Environmental

Emergency Operations

Submitted To:

California Geographic Information Association
1440 Broadway Street, Suite 800
Oakland, CA 94612

Baker

ChallengeUs.

Submitted By:

Michael Baker Jr., Inc.
1300 Clay St. Suite 810
Oakland, CA 94612

The third outreach workshop for the California Geospatial Framework Draft Data Plan was held on Thursday, June 1, 2006 in Bakersfield. The NSDI data themes were presented as potential California-centric themes and participants were asked to allocate their five selection votes among their top choices.

The majority of the twenty-one workshop participants came from local or regional agencies. However, state and private interests had some representation. There were no participants from the federal government

Based on participant voting (funding allocation), several data themes emerged as clear contenders as California-centric themes: Utilities, Cultural and Demographic Statistics, Housing, Buildings and Facilities, Soils, Geologic, and Public Land Conveyance Records. One theme overlaps with the choices from the two previous workshops, Utilities.

There was a clear difference between the interests of this workshop's participants and participants of previous workshops. Representing mostly local and regional agencies in Kern County and the San Joaquin Valley, these participants focused on themes relating to development and growth. Water issues were frequently raised, while issues related to emergency response were the most consistently mentioned at previous workshops. In addition, many of the data sources used by the participants were specific to the county or region. Participants expressed concern that developing framework data sets would require extra work for them to help create, but would be less helpful than existing data sets specific to their region.

See Figure 1 for the total votes for each potential California-centric theme for the second workshop. Figures 2, 3, and 4 show the number of votes from local/regional, state, and private interests, respectively. Figure 5 shows the number of votes for the framework data themes.

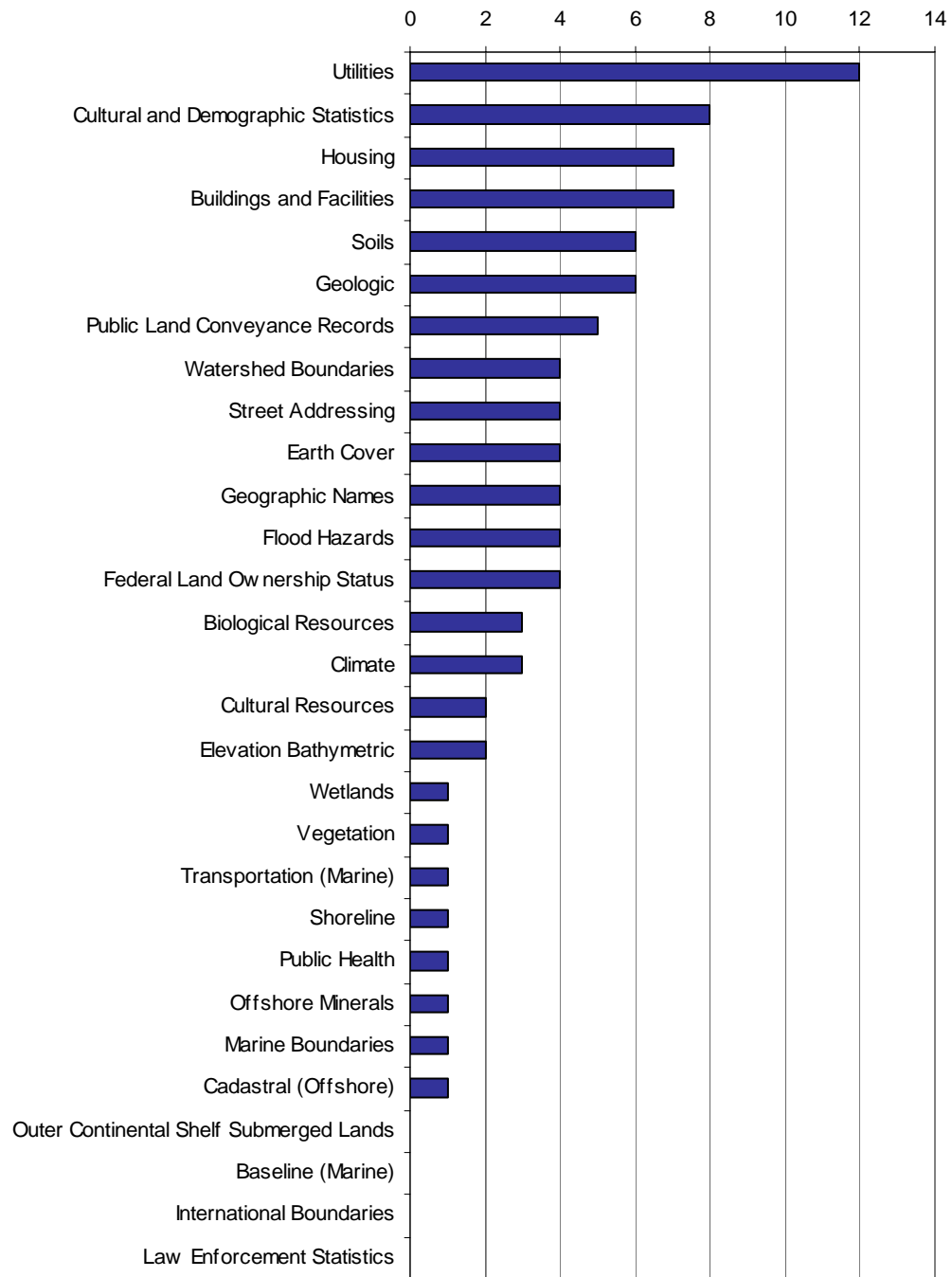


Figure 1. Total votes for California-centric themes

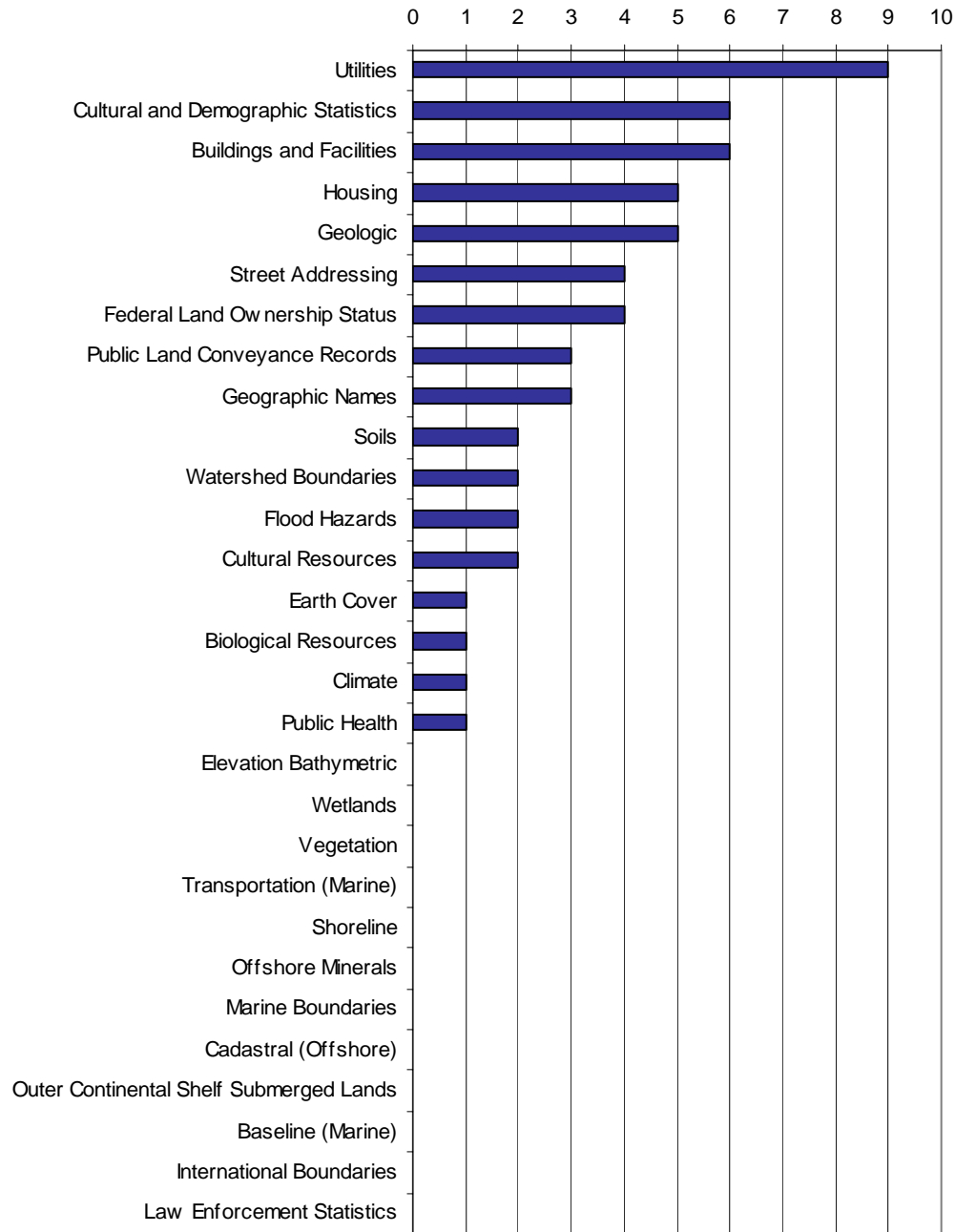


Figure 2. Local government votes for California-centric themes

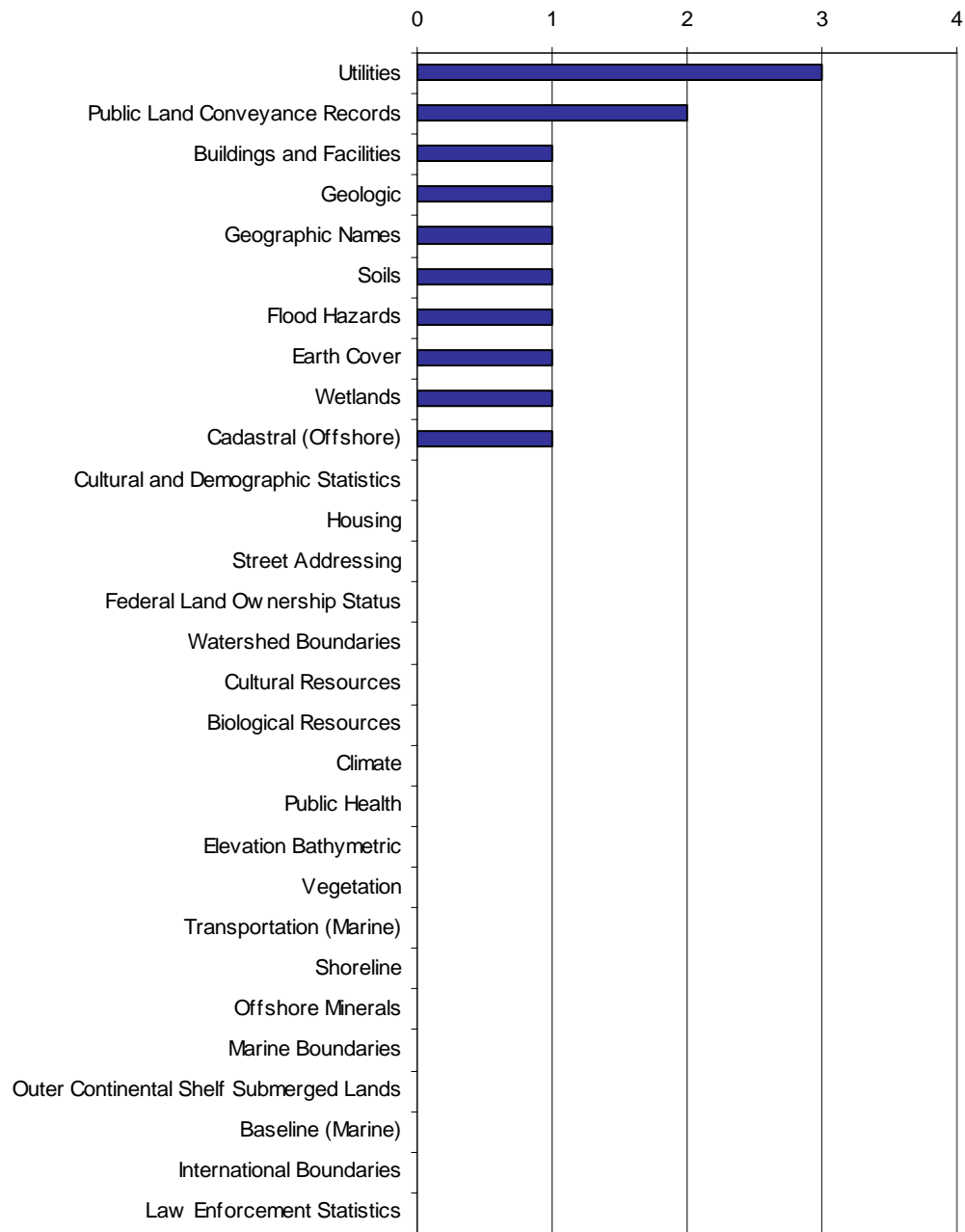


Figure 3. State government votes for California-centric themes

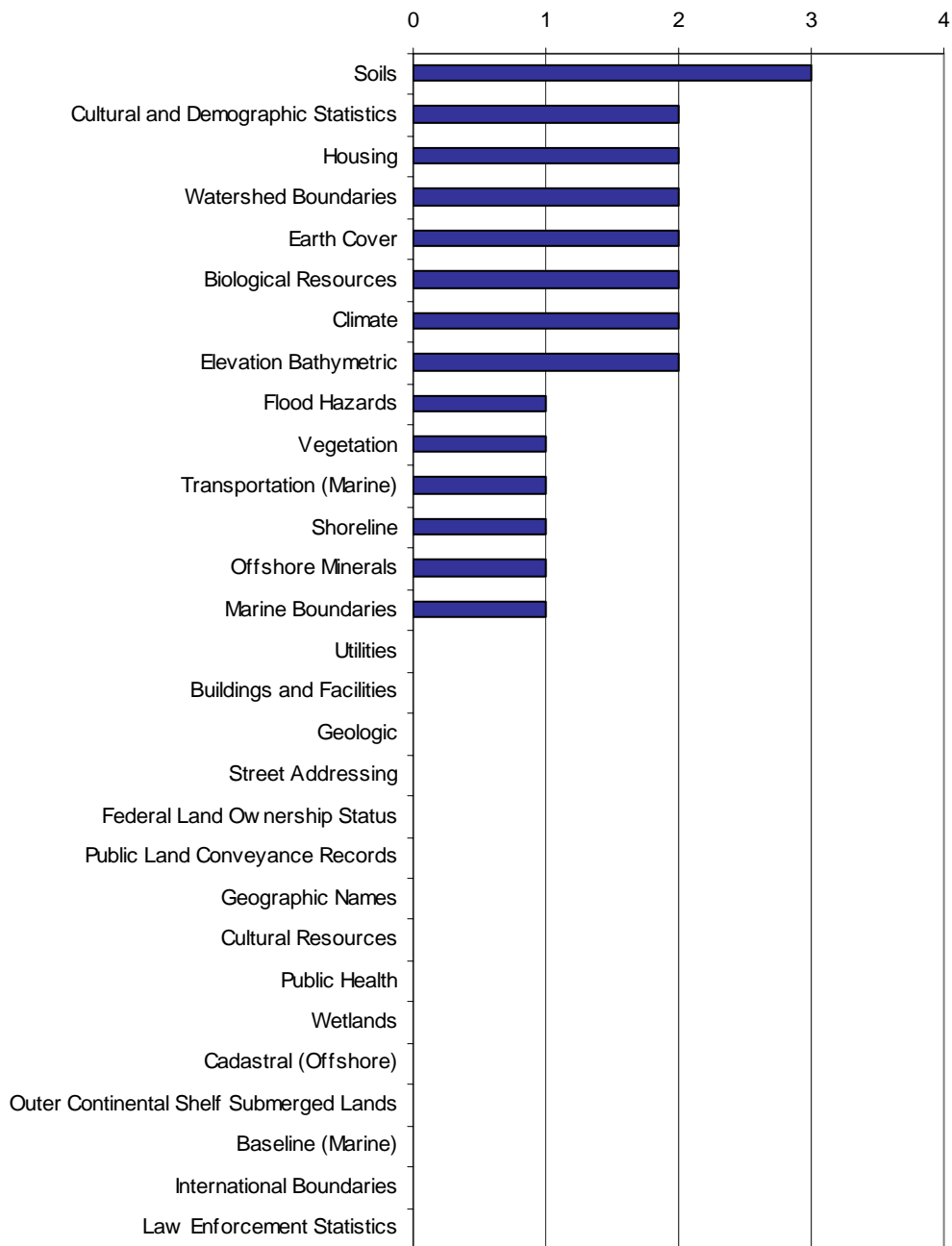


Figure 4. Private interest votes for California-centric themes

Participants were also asked to use one vote to prioritize the core data themes. The results are shown below:

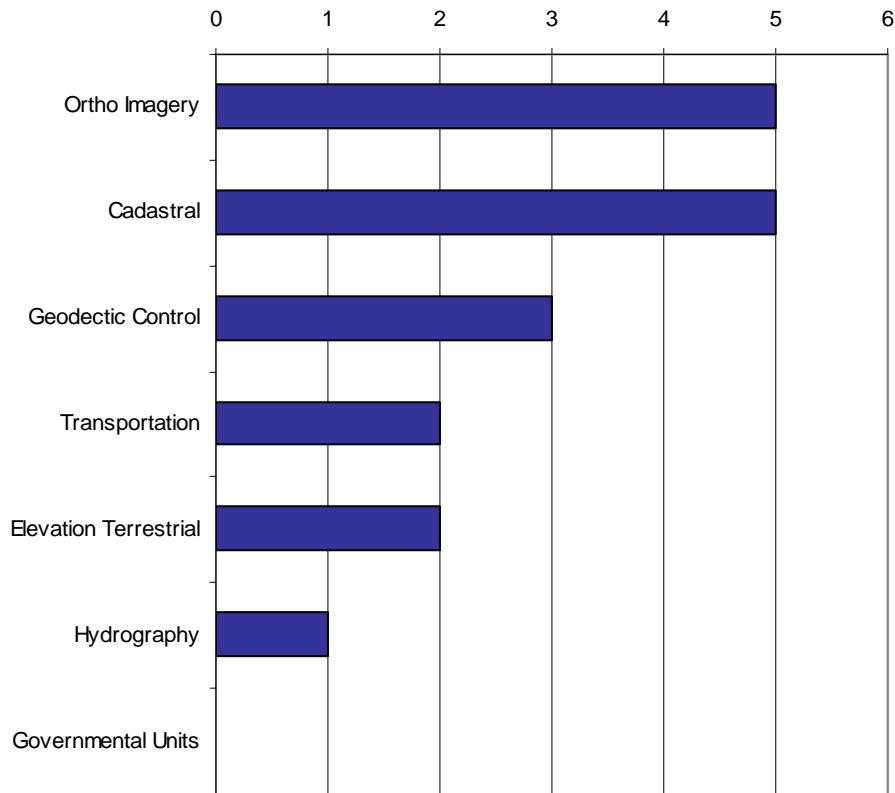


Figure 5. Total votes for core framework data themes

Notes from the third workshop follow. They have been captured into a generic Draft Data Plan template. Results and subsequent research will be consolidated into the Draft Data Plan. Data themes are sorted most votes to fewest. *Italic fonts indicate information that was collected through research based on input from workshop participants.*

Workshop participants, please send your comments, corrections, and additional information to: CAGeoFrame@mbakercorp.com.

CALIFORNIA-CENTRIC THEMES

| UTILITIES | |
|--|--|
| THEME DESCRIPTION | <i>To be completed for Draft Data Plan.</i> |
| THEME USES | Relocation of utilities and prevention of potholing for highway construction; tracking waste systems, septic systems, and their regulation; management of sewage and storm drains. |
| RELATIONSHIP TO OTHER DATA THEMES | Related to ortho imagery, cadastral, transportation, and critical infrastructure. |
| SOURCE OF DATA | PG&E has transmission and gas line GIS data. A private firm collected storm drain locations for Fresno and Bakersfield. The California Energy Commission has data on high-tension power lines, gas lines, and crude oil lines, with very restricted access. Kern County has some sewer line data. There is a state database called GeoTracker, which tracks underground storage tanks and is maintained by the State Water Resources Control Board. The accuracy of the GeoTracker data was presented as marginal. There is also an unidentified source that collected data for utilities crossing aqueduct corridors. The National Hydrography Data (NHD) includes some of this utility data. |
| STATUS | <i>To be completed for Draft Data Plan.</i> |
| STANDARDS | <i>To be completed for Draft Data Plan.</i> |
| PRIMARY DATA USERS & STAKEHOLDERS | <i>To be completed for Draft Data Plan.</i> |
| POTENTIAL DATA HOSTS | <i>To be completed for Draft Data Plan.</i> |
| COMMENTS | <i>To be completed for Draft Data Plan.</i> |

| CULTURAL AND DEMOGRAPHIC STATISTICS | |
|--|---|
| THEME DESCRIPTION | <i>To be completed for Draft Data Plan.</i> |
| THEME USES | Public health, population trends to determine water demands, allocate resources down the road, rehabilitation and restoration of communities, transportation models for estimating exposure to pollutants, redefining water districts or other special district boundaries. |

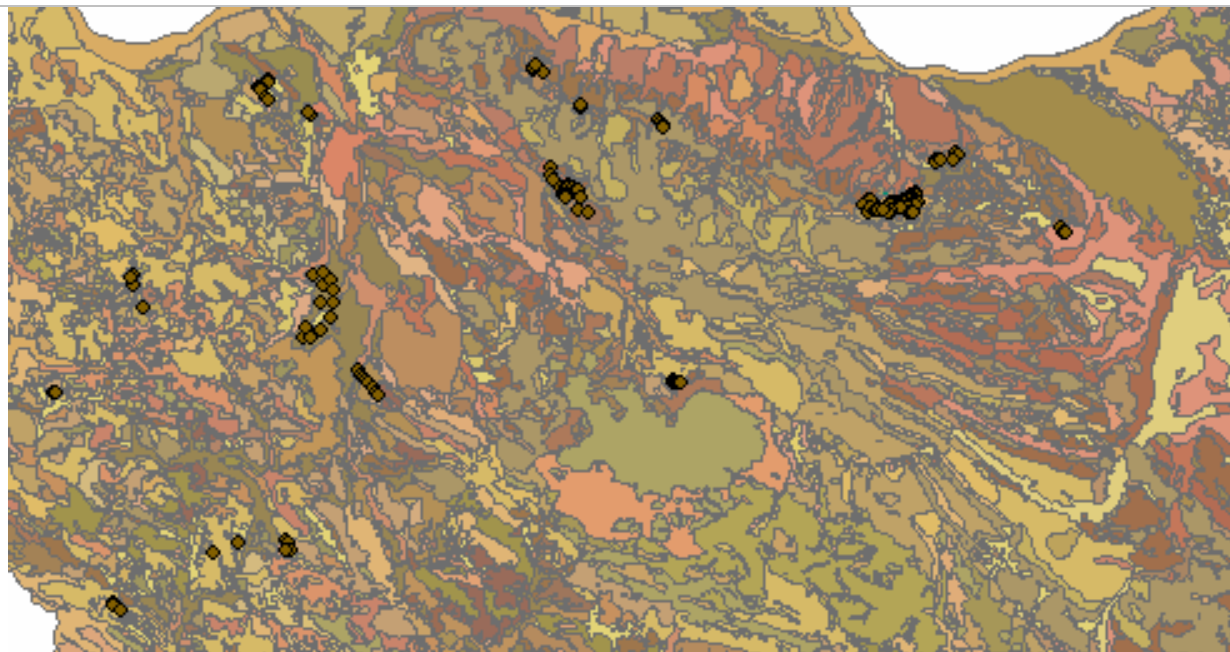
| CULTURAL AND DEMOGRAPHIC STATISTICS | |
|--|--|
| RELATIONSHIP TO OTHER DATA THEMES | Related to hydrography, governmental units, and housing. |
| SOURCE OF DATA | Census provides baseline data. However the growth in Kern County is high, so data from the Building Department and the Assessor's Office is used to supplement. Additional sources include InfoUSA for purchasing employment data and the Department of Finance. |
| STATUS | <i>To be completed for Draft Data Plan.</i> |
| STANDARDS | <i>To be completed for Draft Data Plan.</i> |
| PRIMARY DATA USERS & STAKEHOLDERS | <i>To be completed for Draft Data Plan.</i> |
| POTENTIAL DATA HOSTS | <i>To be completed for Draft Data Plan.</i> |
| COMMENTS | Census boundaries often do not match up with other special boundaries. |

| HOUSING | |
|--|--|
| THEME DESCRIPTION | <i>To be completed for Draft Data Plan.</i> |
| THEME USES | Cities need to report on housing conditions to the federal government every three years. Community and Economic Development Department use the housing data to disperse redevelopment money. Caltrans uses housing for permitting. |
| RELATIONSHIP TO OTHER DATA THEMES | Related to Cultural and Demographic Statistics. |
| SOURCE OF DATA | Local agencies put this together from county parcel and zoning data. |
| STATUS | <i>To be completed for Draft Data Plan.</i> |
| STANDARDS | <i>To be completed for Draft Data Plan.</i> |
| PRIMARY DATA USERS & STAKEHOLDERS | <i>To be completed for Draft Data Plan.</i> |
| POTENTIAL DATA HOSTS | <i>To be completed for Draft Data Plan.</i> |

| | |
|-----------------|--|
| HOUSING | |
| COMMENTS | This is a very local issue and it is even hard to track at the county level. |

| | |
|--|--|
| BUILDING AND FACILITIES | |
| THEME DESCRIPTION | <i>To be completed for Draft Data Plan.</i> |
| THEME USES | Determine scope of a project based on structure proximity to freeway, emergency services, finding out where to direct growth, locating where things aren't, locating groundwater recharge facilities, structures used for 3D modeling, and Route 99 expansion. |
| RELATIONSHIP TO OTHER DATA THEMES | <i>To be completed for Draft Data Plan.</i> |
| SOURCE OF DATA | Buildings and structures can be captured from aerial photos. The California Department of Forestry has data for fire stations. The State has data for school locations, giving a unique ID to each and providing enrollment information. The Geographic Names Information Systems (NGIS) is maintained by the USGS. <i>It provides longitude and latitude of some geographic features.</i> |
| STATUS | <i>To be completed for Draft Data Plan.</i> |
| STANDARDS | <i>To be completed for Draft Data Plan.</i> |
| PRIMARY DATA USERS & STAKEHOLDERS | <i>To be completed for Draft Data Plan.</i> |
| POTENTIAL DATA HOSTS | <i>To be completed for Draft Data Plan.</i> |
| COMMENTS | <i>To be completed for Draft Data Plan.</i> |

SOILS



Geospatial Data Gateway

Home News FAQ About Help Contact

Jun 5 | Mon

NRCS + FSA + RD

S1

Step 1

Instructions

Locate your area of interest using the zoom in, zoom out, center, move, place search, or Minimum Bounding Rectangle controls. Then use **Define Order Area** to proceed to Step 2.

Alternatively, select a county, county(s), or a state with a control below that will go directly to Step 2.

Quick County
Quick County(s)
Quick State

S1: Locate Area S2: Select Products S3: Data Format S4: Shipping Info S5: Confirm Order

SOILS



Spatial and Tabular
 Tabular Only
 No Data

| | |
|--|---|
| THEME DESCRIPTION | <i>To be completed for Draft Data Plan.</i> |
| THEME USES | Looking for groundwater recharging areas, dealing with biosolids disposal areas, pest control, spray permitting, development approval, and terrain modeling. |
| RELATIONSHIP TO OTHER DATA THEMES | Related to transportation, hydrography, land use, and elevation. |
| SOURCE OF DATA | The Farmland Mapping and Monitoring Program by the California Department of Conservation is based on soils. The National Resources Conservation Service has soil data available through the USDA Lighthouse Project Geospatial Data Gateway. Data can be requested by quad and usually has a slight delay for downloading. There are few state-wide data sources. |
| STATUS | <i>NRCS soil survey data is nearly complete for the state (see the map above) and can be ordered for download at the following website: http://datagateway.nrcs.usda.gov/GatewayHome.html</i> |
| STANDARDS | <i>To be completed for Draft Data Plan.</i> |
| PRIMARY DATA USERS & STAKEHOLDERS | <i>To be completed for Draft Data Plan.</i> |
| POTENTIAL DATA HOSTS | <i>To be completed for Draft Data Plan.</i> |
| COMMENTS | <i>To be completed for Draft Data Plan.</i> |

| GEOLOGIC | |
|--|---|
| THEME DESCRIPTION | <i>To be completed for Draft Data Plan.</i> |
| THEME USES | Waste management, seismic, sometimes the only way to determine availability and quality of groundwater, age and composition of soils, subsurface geology for oil for Assessor's Office, and annexation. |
| RELATIONSHIP TO OTHER DATA THEMES | Related to cadastral and utilities. |
| SOURCE OF DATA | Division of Oil and Gas has paper coverages. Department of Conservation has data for purchase. The California Division of Mines and Geology, which is now the California Geologic Survey (CGS), has paper geologic maps at 1:750,000 scale. Some maps are out of print. The Mohave Desert Ecosystem Program has very detailed data, for a small geographic area of the state, and they use a different geologic nomenclature. |
| STATUS | <i>To be completed for Draft Data Plan.</i> |
| STANDARDS | <i>To be completed for Draft Data Plan.</i> |
| PRIMARY DATA USERS & STAKEHOLDERS | <i>To be completed for Draft Data Plan.</i> |
| POTENTIAL DATA HOSTS | <i>To be completed for Draft Data Plan.</i> |
| COMMENTS | <i>To be completed for Draft Data Plan.</i> |

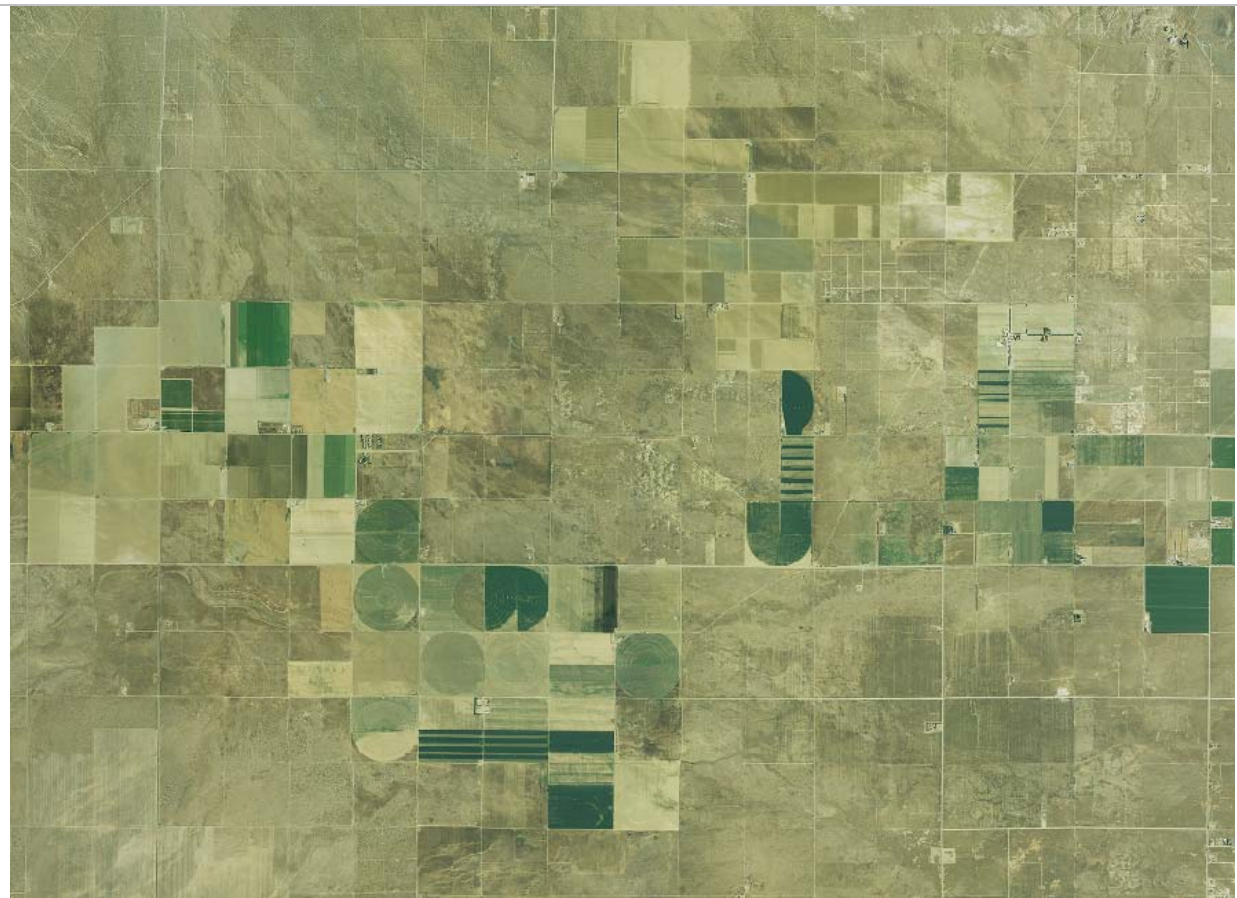
| PUBLIC LAND CONVEYANCE RECORDS | |
|--|--|
| THEME DESCRIPTION | <i>To be completed for Draft Data Plan.</i> |
| THEME USES | Transfer of water rights and removing all rights for acquisition of public rights-of-way. |
| RELATIONSHIP TO OTHER DATA THEMES | Related to transportation, cadastral, and hydrography. |
| SOURCE OF DATA | The surveyor's office has paper maps. BLM maintains this data in the GeoCommunicator. Assessor's maps also contain some data. Caltrans has superseded right-of-way maps. |
| STATUS | <i>To be completed for Draft Data Plan.</i> |

PUBLIC LAND CONVEYANCE RECORDS

| | |
|--|---|
| STANDARDS | <i>To be completed for Draft Data Plan.</i> |
| PRIMARY DATA USERS & STAKEHOLDERS | <i>To be completed for Draft Data Plan.</i> |
| POTENTIAL DATA HOSTS | <i>To be completed for Draft Data Plan.</i> |
| COMMENTS | <i>To be completed for Draft Data Plan.</i> |

CORE FRAMEWORK THEMES

ORTHO IMAGERY



| | |
|--------------------------|---|
| THEME DESCRIPTION | <i>To be completed for Draft Data Plan.</i> |
| THEME USES | <i>To be completed for Draft Data Plan.</i> |

| ORTHO IMAGERY | |
|--|---|
| RELATIONSHIP TO OTHER DATA THEMES | <i>To be completed for Draft Data Plan.</i> |
| SOURCE OF DATA | National Agriculture Imagery Program (NAIP) has one-meter true color imagery captured in mid-2005. Most other ortho imagery sources are captured commercially and not available for general public distribution.. |
| STATUS | <i>To be completed for Draft Data Plan.</i> |
| STANDARDS | <i>To be completed for Draft Data Plan.</i> |
| PRIMARY DATA USERS & STAKEHOLDERS | <i>To be completed for Draft Data Plan.</i> |
| POTENTIAL DATA HOSTS | <i>To be completed for Draft Data Plan.</i> |
| COMMENTS | Mr. SID compressed versions available now with DOQQ-like tiled imagery available Fall 2006. |

| CADASTRAL | |
|--|--|
| THEME DESCRIPTION | <i>To be completed for Draft Data Plan.</i> |
| THEME USES | Boundaries of ownership, water district boundaries, property valuation for taxation and infrastructure. |
| RELATIONSHIP TO OTHER DATA THEMES | Ties in with geodetic control. |
| SOURCE OF DATA | Assessor's office is the primary source. Geographic Coordinate Database (GCDB) <i>maintains the Public Land Survey System.</i> Cadastral data is available free online in Kern County. |
| STATUS | <i>To be completed for Draft Data Plan.</i> |
| STANDARDS | <i>To be completed for Draft Data Plan.</i> |
| PRIMARY DATA USERS & STAKEHOLDERS | <i>To be completed for Draft Data Plan.</i> |
| POTENTIAL DATA HOSTS | <i>To be completed for Draft Data Plan.</i> |

| | |
|------------------|---|
| CADASTRAL | |
| COMMENTS | Difficult to determine boundaries of ownership. Resurveying is sometimes necessary. |